

Appendix 4:

Daylight Study for Open Office-
AGI32 Calculation Output

EXTERIOR MOUNTED SHADES



[Home](#) | [About Insolroll](#) | [Products](#) | [Why Choose Insolroll?](#) | [Request Information](#)

Exterior Shades: Fabrics

Solar Screen Shades

AV Blackout Shades & Dual Shades

Exterior Window Shades

Patio Sun Shades

Motorized Window Treatments

Switching & Motor Controls

Wiring Diagrams

637 S. Pierce Ave.
Louisville, CO 80027
USA

Ph: 800.447.5534
Ph: 303.665.1207
Fax: 303.665.1209

info@insolroll.com

[Exterior Window Shades](#) | [Fabrics](#) | [Hardware](#) | [PDF Brochure](#) | [Photo Gallery](#)

[SW 4000 Fabrics](#) | [Soltis 86 Series Fabrics](#)

NEW! Designer Roller Shade System

NEW! Insolroll Quiet Motor System (IQM)

Energy Efficient Silver Screen Fabric

National Account Window Covering Service

State-of-the-Art Production Facility

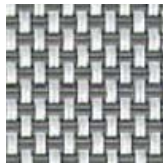
Pocket Details for Arched & Angletop Windows

SW 4000 Series

(5% openness)



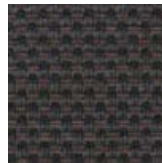
P06 Chalk



P10 Granite



Q12 Pebblestone



Q16 Tobacco



V07 Pewter



V10 Ebony



P07 Alabaster



Q15 Greystone



V15 Ash

Technical Specs

Phifer SheerWeave © 4000 Series		
Composition: 25% Polyester, 75% PVC on Polyester		
SheerWeave 4000	Openness Factor 5%	UV Blockage 95%

Solar Heat Control Properties of Phifer SheerWeave Style 4000 Fabrics Installed Internally, Zero-Degree Profile Angle	
*Solar Optical Properties	Shading Coefficient w/

Technical Specs

Solar Heat Control Properties of Phifer SheerWeave Style 4000 Fabrics Installed Externally, 30-Degree Profile Angle				
		* Solar Optical Properties		
Style No.	Color	TS	RS	AS
P06	Chalk	15	69	16

© 2006 Insolroll Inc. All rights reserved. [Privacy Policy](#) | [Terms of Use](#) | [Warranty Info](#) | [Site Map](#) | [Dealers](#)

P07	Alabaster	14	58	28
P10	Granite	9	42	49
Q12	Pebblestone	13	50	37
Q15	Greystone	9	34	57
Q16	Tobacco	6	5	89
V07	Pewter	7	28	65
V10	Ebony	5	5	90
V15	Ash	6	11	83

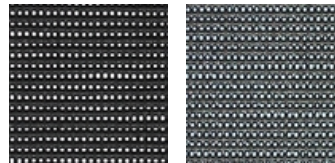
Style No.	Color	Shading Coefficient w/Single			Shading Coefficient w/Insulating		
		1/8 CL	1/4 CL	1/4 HA	1/2 CL	1 CL	1 HA
P06	Chalk	0.17	0.17	0.16	0.16	0.15	0.13
P07	Alabaster	0.18	0.18	0.16	0.15	0.15	0.13
P10	Granite	0.15	0.15	0.14	0.09	0.09	0.09
Q12	Pebblestone	0.18	0.18	0.17	0.15	0.15	0.13
Q15	Greystone	0.16	0.16	0.15	0.10	0.10	0.10
Q16	Tobacco	0.16	0.16	0.16	0.12	0.12	0.11
V07	Pewter	0.15	0.15	0.14	0.12	0.11	0.10
V10	Ebony	0.16	0.15	0.15	0.12	0.12	0.11
V15	Ash	0.16	0.16	0.15	0.11	0.11	0.11

* Performance evaluations conducted by Matrix, Inc., Mesa, Arizona.

DEFINITION OF TERMS:

- Ts - (Solar Transmittance) The percentage of solar energy passing through the fabric.
- RS - (Solar Reflectance) The percentage of solar energy reflected by the fabric.
- As - (Solar Absorptance) The percentage of solar energy that the fabric absorbs.
- Tuv - (Ultraviolet Transmittance) The percentage of UV rays that pass through the fabric. It is related to the openness factor.
- TV - (Visible Transmittance) The percentage of visible light passing through the fabric. It is related to the amount of glare a person receives through a glazing system.
- SC - The percentage of solar heat gain that is transmitted to the interior through the glass and shading system.
- O/F - (Openness Factor) The percentage of open area to the total area of the fabric.
- 1/2 CL - Standard clear 1/8" glass (3mm)
- 1/4 CL - Standard clear 1/4" glass (6mm)
- 1/4HA - Heat absorbent 1/4" glass (6mm)

Soltis 86 Fabrics



Black

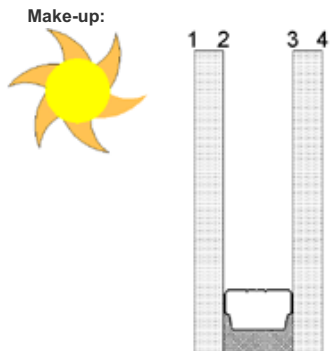
Bronze

Soltis 86 is a 14% open fabric especially well suited for large patio and exterior window shade applications. Soltis 86 is woven using a unique technology called Preconstraint manufacturing. The polyester yarns are first woven and then coated with tension in both the warp and fill directions. Preconstraint allows the fabric to be railroaded with less risk of hourglassing and distortion than traditional fabrics.

LOW-E GLAZING



Solarscreen Radiant Low-E (VRE) Insulating Glass VRE 11-67



Notes:
 1/4" (6mm) Arctic Blue VRE-67 #2
 1/2" (13.2mm) airspace
 1/4" (6mm) clear

Product	VRE 11-67
Transmittance	
Visible Light	38%
Solar Energy	17%
Ultra-Violet*	8%
Reflectance	
Visible Light-Exterior	15%
Visible Light-Interior	24%
Solar Energy	11%
ASHRAE U-Value	
Winter Nighttime	0.30 Btu/(hr x sqft x °F)
Summer Daytime	0.27 Btu/(hr x sqft x °F)
European U-Value	1.6
Shading Coefficient	0.28
Relative Heat Gain	60 Btu/hr x sqft
Solar Factor (SHGC)	0.24
LSG	1.58

* Ultra-violet defined as 300 to 380 nanometers (nm)

[Print this page](#) | [Email this page](#)

Recipient Email
Sender Email
Subject

OK



The **Shadowline System** combines several standard C/S Grille/Sun Control components to create a totally customized appearance.

Shadowline Sunshades utilizes a modular grille as an infill panel to create an airy, but highly effective sun control on all southern and western exposures.

Perimeter tube frames that house the modular grilles are mechanically fastened to a single outigger through the use of 2" x 4" rectangular tubes to produce a free-floating visual effect from beneath the grille.

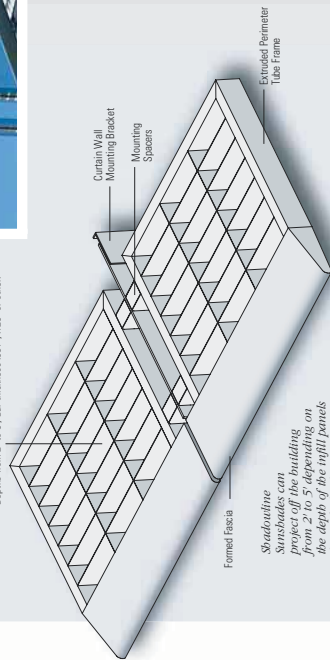
A variety of **fascias and infill panels** are available (see below). Modular grilles are available in 2" to 12" cell spacing.

Infill Panels



Modular Grille Infill
 • Patterns available from 2" x 2" to 12" x 12",
 Depths from 2" to 6", bar thickness .081", .125" or other.

Modular Grille Infill
 • Patterns available from 2" x 2" to 12" x 12",
 Depths from 2" to 6", bar thickness .081", .125" or other.



Shadowline Sunshades can be installed on building facades from 2" to 5" depending on the depth of the infill panels (2" to 6" deep).

Project Name:
 Nelson Media
Architect:
 Alfonso Architects, Inc., Tampa, FL

Fascias



C/S Eclipse Operating Sunshades provide optimum solar shading on all elevations. Controlled by electric or pneumatic operation, these sunshades can also be operated manually.

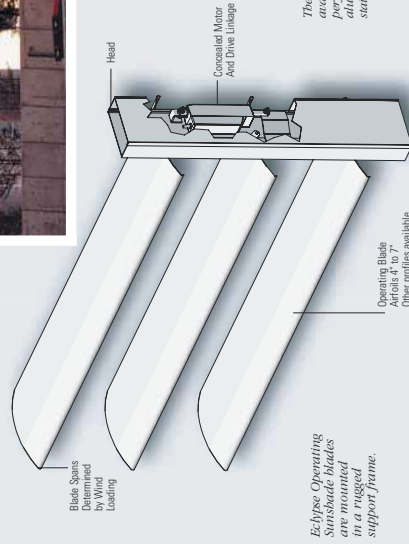
C/S Eclipse Sunshades pivot up to 110° to reduce solar glare and heat gain and are designed to control the amount of daylight coming into the building's interior. Blades can close completely to provide for energy savings, or for security purposes.

C/S Eclipse Sunshades can be mounted above or below skylights.

Plan View

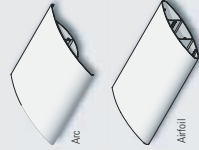


Operating sunshades can be mounted horizontally or vertically depending on the building's location and aesthetics.



Eclipse Operating sunshade blades are available in a curved support frame.

Blade Options



The arc blade is available with a perforated top in aluminum or stainless steel.

Project Name:
 University of Toronto, Babson Center
Architect:
 Diamond & Schmitt Architects Inc., Toronto, Ontario

USING THIS GUIDE

Below is important data that will help you understand the effects of wind and snow on your project's sunshade. We've also included typical attachment details to help you in your design. The information included on these pages is generic in nature and should be used as a guide only. For specific information, call the C/S Sun Control Design Group at 1-800-631-7379.

DEFINITIONS

Wind Load

Pressure that is applied to a sunshade or its blade as a result of wind expressed in psf (pound per square foot).

Span

The length of a blade between point of attachment.

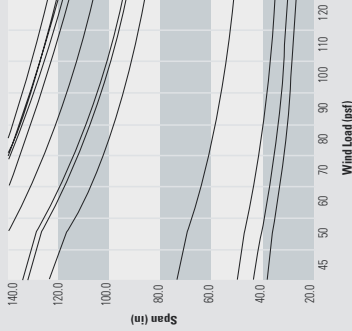
Snow Load

Pressure that is applied to a sunshade or its blade as a result of built up snow expressed in psf (pound per square foot).

Deflection

The amount of sag up, down in or out that a blade will move when snow or wind load are applied.

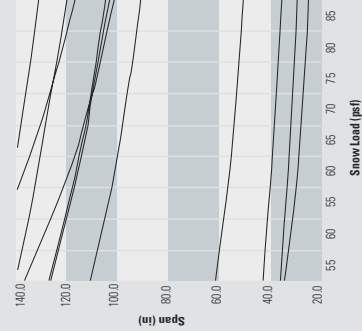
MAXIMUM WIND LOAD SPAN BY BLADE STYLE



Basic Wind Speed	PSF	KPA
85	46	2.2
90	52	2.5
100	64	3.0
110	77	3.7
120	92	4.4
130	107	5.1
140	125	5.9
150	143	6.9

Mean Eave Height = 78'
 Element Height = 7'
 Building Category = III
 Exposure Factor = 1.15
 Roof Slope = 3°
 Exposure GCP = -1.80

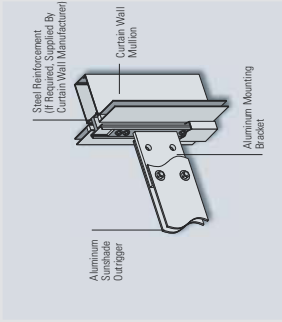
MAXIMUM SNOW LOAD SPAN BY BLADE STYLE



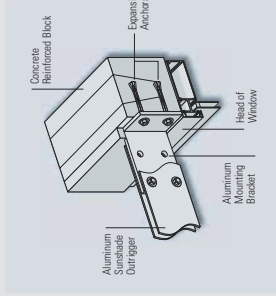
Ground Snow Load	PSF	KPA
5	48	2.3
10	59	2.8
15	70	3.4
20	81	3.9
25	86	4.1
30	89	4.3
35	93	4.4

Exposure Factor = 1
 Thermal Factor = 1.2
 Importance Factor = 1.1
 Ht. from Element to Eave = 7'-0"
 ASCE 7-88

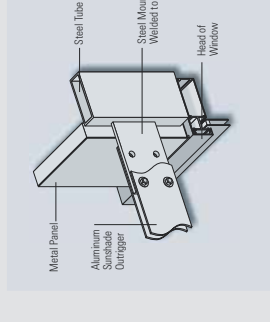
TYPICAL MOUNTING OPTIONS (ALUMINUM TEE AND STEEL PLATES) Call for help with your particular conditions



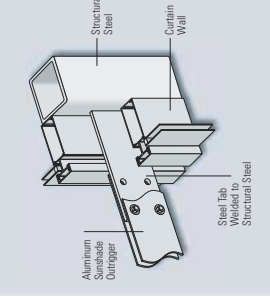
On Curtain Wall



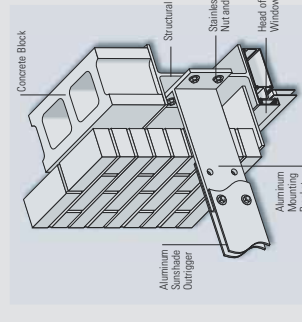
Bolted to Concrete Lintel



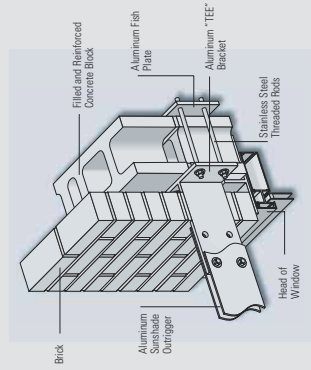
Steel Tab Welded to Steel Tube Behind Metal Panel



Steel Tab Welded to Vertical Steel



Bolted to Steel Behind Brick



On Block, Behind Brick

21-Jan 8:30am 8'	897	0.6	1.5	1.1	0.7	0.9	0.6	0.5	0.5	379	618	634	644	651	658	665	670	675	680	685	690	695	699	704	707	709	709	704	689	670	
	789	0.7	1.4	0.6	0.8	0.5	0.6	0.7	0.9	248	396	450	473	486	497	505	512	518	524	529	535	540	546	551	556	559	561	557	541	487	
	712	496	0.6	0.7	0.6	0.5	0.8	0.7	0.8	0.8	0.9	2.2	10.3	50.9	60.7	11.1	1.8	0.7	0.5	0.5	0.4	0.3	0.4	0.5	0.6	0.5	0.2	24	73.5	26.1	273
	639	452	0.4	0.4	0.6	0.5	0.6	0.9	0.8	1.2	2	4.3	10.8	21.4	22.4	12.1	4.6	2.1	1.1	0.7	0.5	0.7	0.8	1.1	2.3	8.3	29	47.5	31.4	8.4	
	569	0.7	0.4	0.6	0.5	0.6	0.8	0.9	1.1	1.5	0.7	0	0	8	8.1	5.9	3.8	2	1.1	1	1	1	1	0.8	1.7	3.1	6.7	12.8	16.7	13.5	7.4
	490	0.4	0.6	0.5	0.7	0.8	0.9	1	1.3	0.9	0.8	0.9	0.9	1	1	1	0.9	2	1	1	1	1	1.2	1.9	1	1.1	1.1	1.1	1.1	1.2	
	403	0.7	0.7	0.8	0.8	0.9	1	1	0.9	1	0.9	1	1	1	1	1	1.4	1.5	1.1	0.9	1.2	1.3	0.9	0.9	0.9	0.9	0.9	0.9	0.9	0.9	
	300	0.7	1.1	1.1	1	1	1.2	1.2	1.2	1.3	1.3	1.3	1.3	1.3	1.3	1.3	1.2	1.3	1.5	1.5	1.4	1.3	1.1	1.1	1.1	1.1	1	1	1	1.1	
	0.7	0.8	1.3	1.1	1.2	1.7	2.1	2.3	2.3	2.3	2.5	2.5	2.4	2.5	2.4	2.3	2.3	2.1	2.3	2.2	2.1	2	1.8	1.6	1.7	1.5	1.6	1.5	1.4	1.4	
	0.7	0.9	1	1	1.2	1.6	2.8	3.1	3.3	3.4	3.4	3.4	3.4	3.3	3.4	3.1	3.1	3	2.9	2.9	2.6	2.5	2.3	2.3	2.2	2.2	2.1	2	2	1.9	
	0.7	0.8	1	0.9	0.8	0.9	3.3	4.2	4.6	4.8	4.9	4.8	4.6	4.6	4.4	4.3	3.9	3.9	3.9	3.6	3.5	3.4	3.2	3	3	2.7	2.7	2.5	2.4	2.4	
	694	458	428	385	324	244	165	5.5	6.1	6.4	6.2	6.2	6.2	6.1	5.7	5.6	5.2	5.2	4.8	4.8	4.5	4.3	4.1	4.2	3.9	3.6	3.4	3.3	3.1	3.1	
	558	503	459	413	349	268	188	7.5	7.9	8	8.3	8.1	8	7.8	7.5	7.1	6.8	6.5	6.2	5.9	5.3	5.3	5.1	5	4.5	4.5	4.3	4.1	3.8	3.7	
	537	503	458	415	358	274	8.3	9.2	9.6	9.9	9.8	9.6	9.2	9	8.6	8.3	7.9	7.5	7.3	7	6.7	6.4	6.1	5.8	5.5	5.1	5	4.6	4.2	4	
	470	459	425	392	354	282	10.1	10.2	10.5	11	10.8	10.6	10.2	9.9	9.5	9.1	8.8	8.6	8.3	7.9	7.6	7.1	6.8	6.5	6.2	5.8	5.6	5.4	5.1	4.9	

21-Jan 10:30am 6.52'	1631	1.9	3.5	3	2.6	3.1	2.6	2.5	2.3	767	1260	1293	1313	1329	1346	1360	1374	1387	1400	1413	1426	1440	1453	1467	1480	1493	1504	1510	1503	1467	
	1326	1.8	3.7	2.8	3.3	3	3.4	3.6	4	515	841	950	987	1010	1030	1044	1058	1070	1083	1095	1107	1119	1132	1144	1156	1168	1178	1182	1170	1081	
	1125	734	3.1	3.5	3.4	3.6	4.2	4.4	4.7	4.5	4.4	6.7	24.6	11.9	13.1	25.4	6	4.3	3.8	3.5	3.3	3.4	3.8	4.5	4.7	3.9	5.2	7	169	61	593
	961	634	3.2	3.7	4.3	4.4	4.7	5.6	5.7	6.6	7.7	12.6	28.3	54.1	56.7	32	15.1	8.7	5.5	4.4	4.2	4.9	5.6	7.2	10.2	23.8	73.3	117	78.1	23.7	
	828	3.7	3.9	4.8	5.3	5.6	6.3	6.8	7.6	8.8	6.5	0.1	0.1	21.1	21.6	16.3	15.8	9.5	4.8	4.6	4	4.8	5.1	10.9	13.1	19.9	35.1	45.1	37.4	22.9	
	687	4.4	5.5	6	6.9	7.4	8	8.8	9.7	9.2	10	11.2	11.8	12.4	13	13.1	12.2	15.7	14.4	15	15.4	15.7	16.5	15.3	15.1	18.1	18.7	19.3	19.9	20.6	
	539	6.4	7.5	8.6	9.1	9.8	10.3	10.8	11.1	12.1	12.7	13.5	14.2	14.7	15	15.3	15.5	16.9	17.4	16.6	16.5	17.4	17.8	16.5	16.7	17.2	17.3	17.5	17.3	16.8	
	374	8.9	11	11.7	12.1	12.3	13.1	13.8	15	16.1	17.1	17.9	18.8	19.4	19.8	20.2	20.4	20.7	21.7	22.1	22	22	21.5	21.5	21.5	21.6	21.6	21.7	21.9	21.7	21.5
	86	11.6	14.2	14.9	15	15.5	17	18.8	21	22.8	24.6	25.5	26.3	27.1	27.7	28	28.2	28.4	29.5	29.7	29.9	29.7	29.1	29.3	29.4	29.4	29.4	29.5	29.6	29.4	29.4
	9.8	13.4	16.3	17	16.6	17	21.3	25	28.9	31.7	33.6	35.2	36.6	37.5	38.5	38.2	38.6	39	39.6	40.3	40.2	40.1	40	39.9	40.1	40.1	40.3	40.5	40.5	40.3	
	8.7	12.3	17.5	17.3	14.5	14.2	23.6	33.7	40.3	44	46.9	48.8	50	51.1	51.9	52.1	51.8	52.6	52.9	53	53.8	53.7	53.9	53.7	53.6	53.9	54	54.3	54.2	54	
	1932	1903	811	1837	1864	504	340	46.5	53.4	58.6	62.2	64.5	66.3	67.3	68	68.1	68.1	68.5	68.1	68.9	68.8	68.9	68.8	69	68.6	68.6	69	69.4	69.3	69.1	
	1859	1808	1769	1734	1676	1563	390	59.4	65.8	72.1	76.3	78.6	80.3	81.3	81.8	82.2	82.2	82.3	82.3	82.2	81.6	81.4	81.4	81.5	81.4	81.4	81.6	81.8	81.9	82	
	1796	1755	1716	1682	1636	1545	63.3	70.9	76.8	81.7	85.1	87.4	88.7	89.4	89.7	90	89.8	89.9	89.4	88.8	88.5	88	87.6	87.4	87.2	87.1	87.5	87.5	87.7	87.3	
	633	1679	1649	1615	1591	1534	116	97.3	88.9	91.6	93.5	93.7	95.4	95	94.9	94.8	93.3	94.4	93.2	90.7	91.8	90.7	89.6	89.2	88.1	88.5	89	88	88.8	88.4	

21-Jan
12:30pm
6'

1194	2.1	3.4	2.8	2.6	2.9	2.9	2.8	2.7	769	1269	1325	1359	1383	1404	1424	1442	1460	1478	1495	1513	1530	1547	1565	1583	1601	1618	1632	1640	1627
939	1.8	3.7	3.1	3.5	3.6	3.9	4.2	4.5	527	868	984	1020	1044	1064	1081	1098	1114	1130	1145	1161	1176	1192	1208	1224	1240	1255	1266	1263	1182
808	515	3.7	4.2	4.1	4.5	5.1	5.3	5.8	5.5	5.3	7.6	26.1	124	136	256	5.7	4.7	4.3	3.8	3.5	3.6	4	4.9	5.1	4.5	5.6	179	64.8	630
711	437	4.2	4.8	5.5	5.8	6.2	7.1	7.1	8	9.1	13.8	30.1	56.7	59.1	33.3	15.8	9.2	5.8	4.7	4.6	5.3	5.9	7.6	11.3	25.9	77.9	123	82.2	25.1
629	4.6	5.5	6.6	7.2	7.8	8.5	9.1	9.7	10.8	8.2	0.1	0.1	22.2	22.6	17.1	16.7	10.5	5.2	4.9	4.3	5.2	5.6	11.2	14.2	21.3	37.3	47.8	39.6	24.3
520	6.2	7.8	8.8	10	10.8	11.5	12.2	12.9	12.2	12.5	13.6	13.9	14.3	14.6	14.4	13.2	16.6	15.3	15.7	16.2	16.6	16.8	15.5	15.1	18.4	18.9	19.8	20.6	21.5
401	8.6	10.8	12.5	13.7	15.1	15.6	15.8	15.8	16.2	16.5	16.5	17.1	16.9	16.7	16.7	17.9	18	17	16.7	17.3	17.7	16.2	16.2	16.6	16.8	16.6	16.7	16	16
243	12.1	15.1	17.3	19	20.1	21.3	21.3	21.9	22.2	22.2	22.5	22.7	22.8	22.5	22.3	22.4	22	22.5	22.3	21.8	21.5	20.9	20.8	20.5	20.5	20.2	20.2	20.3	20.1
11.3	15.7	19.7	22.5	24.6	26.3	28.1	29.8	30.6	31.4	31.8	32	32.4	32.3	31.8	32	31	31.2	30.9	30.4	30.2	29.4	28.1	28.1	28.2	28	27.4	27.2	27.3	27.3
12.7	17.9	22.8	26.2	28.4	30.9	35.4	38.7	41.5	42.9	44.2	44.4	45	44.7	44.1	43.9	43	42.7	41.7	40.9	40.6	39.8	38.7	36.9	37.2	36.7	36.7	36.5	36.3	36.2
11.1	16.6	23.9	26.2	26.7	30.8	40.5	49.4	55.9	58.8	61	63.1	61.2	61.6	61.5	59.8	58.6	57.7	56.3	54.2	53.4	51.8	51.6	50	49.3	48.9	48.2	48.3	47.9	47.4
1939	1983	2020	2036	2036	2015	2079	62.4	72.9	78.1	81.5	82.5	82.3	82.7	81	79.3	78.7	76.1	72.5	71.7	69	66.6	65.4	64.6	63.1	63.1	62	62	61.7	60.5
1950	1984	2005	2013	2009	2001	2203	79.8	88.3	97	100	102	103	103	100	98	96.8	92.8	90.1	86.1	84.8	81.6	80.7	78.2	77	75.8	74.8	74.4	74.2	72.7
1920	1943	1956	1957	1954	1945	79.3	97.2	104	112	116	118	118	117	115	114	109	106	103	99.3	96	94.1	90.9	89.8	88.6	86.6	87.1	84.6	83.8	82.9
1870	1885	1890	1878	1888	1906	146	147	152	161	164	161	165	163	159	158	155	153	149	140	142	138	136	135	131	131	131	125	129	127

21-Jan
2:30pm
6.31'

532	1.3	2.3	1.9	1.7	1.9	2	2	1.9	544	884	957	1005	1036	1058	1078	1095	1111	1127	1142	1158	1173	1187	1203	1217	1232	1247	1260	1269	1270
441	1.1	2.1	1.8	2.1	2.1	2.3	2.5	2.7	381	622	704	742	767	787	805	821	837	853	868	882	896	910	925	939	953	967	977	977	919
420	314	2.1	2.2	2.2	2.5	2.9	3.1	3.4	3.3	3.3	5.2	18.5	87	94.1	17.3	3.9	3	2.8	2.7	2.5	2.6	3.1	3.7	3.7	3.3	41.1	130	48.1	480
402	283	2.4	2.6	3	3.2	3.4	4	4	4.7	5.7	9.3	20.5	38.8	40.3	22.3	9.5	5	3.5	3.1	3.2	3.7	4.2	5.4	8	18.6	55.5	87	58.4	18.4
378	2.5	3	3.4	3.8	4.2	4.7	5	5.4	6.1	4.3	0	0	15.1	15.3	11.6	10.4	6.1	3	3	2.8	3.7	4	7.6	9.6	15.2	26.4	33.7	28	17.4
327	3.2	4	4.6	5.4	5.8	6.2	6.7	7.1	6.5	6.8	7.6	8	8.2	8.6	8.6	7.6	10.2	9.9	10.4	10.8	11.2	11.7	10	10.3	13.5	14.2	15.1	15.9	16.7
266	4.3	5.5	6.5	7.3	8.1	8.5	8.6	8.3	8.3	8.3	8.5	8.7	8.9	9.1	9.1	9.2	10.2	10.6	10.1	10.1	10.8	11.1	10.1	10.3	10.8	10.9	11	11	10.7
153	5.8	7.4	8.8	10.1	11.1	11.6	11.6	11.5	11.3	11.1	11.4	11.5	11.6	11.8	12	12.1	12.3	12.9	13.2	13.1	13.1	12.7	12.7	12.8	12.9	13	13.1	13.1	13
5.2	7.4	9.5	11.4	13.2	14.6	15.5	15.8	15.7	15.5	15.7	15.8	16.2	16.5	16.7	17.1	17	17.2	17.7	17.9	18.1	17.9	17.6	17.7	17.6	17.8	17.6	17.8	17.6	17.6
5.8	8.3	10.8	13.2	15.3	17.3	19.2	20.2	20.6	20.8	21.3	21.8	22.2	22.6	23	22.9	23.3	23.5	23.6	23.9	23.9	24	23.8	23.6	23.9	23.8	23.9	23.9	24	24
5.1	7.5	10.9	12.9	14.7	18.5	22	24.5	26	27.5	28.9	29.6	29.8	30.5	30.9	31.2	31.5	31.4	31.8	31.8	31.8	32	31.9	31.8	31.5	31.5	31.7	31.7	31.6	31.2
386	431	484	1436	1482	1531	1775	28.7	32.6	35.6	37.7	39.2	39.5	40.5	40.9	41.3	41	41.5	40.8	41.1	41	41.4	41.5	41.3	40.7	40.5	40.3	40.6	40.1	39.9
417	466	1415	1454	1495	1592	1254	33.5	39.7	44.6	47.2	48.8	48.9	49.2	49.7	50.1	50.1	49.6	49.7	49.6	49.5	49.4	49.5	49.2	48.7	48.3	47.8	47.8	47.1	46.5
428	1374	1407	1437	1482	1614	38.2	42	48.5	52.2	54.2	55.4	56	55.8	56.1	56	56	55.5	55.5	54.6	55	54.5	54.1	53.8	53.2	52.7	52.7	51.7	51.2	50.2
1326	1345	1365	1380	1425	1562	56.6	64	65.4	67.8	70.1	69.4	70.6	69.5	68.5	69.2	68.5	68.9	68.7	66.2	67.1	66.4	65.1	65.7	64.4	63.8	63.4	61.5	62	61.5

21-Jan 4:30pm 9.25'		171	02	0.4	0.2	0.1	0.2	0.2	0.2	0.3	0.3	115	200	228	250	263	272	280	286	293	299	305	311	316	321	326	331	335	338	340	339	336
		170	0.1	0.3	0.1	0.2	0.2	0.2	0.2	0.3	0.3	79.2	123	152	170	182	190	197	204	211	218	225	231	237	243	249	255	260	263	265	260	236
		176	135	0.1	0.1	0.2	0.2	0.2	0.2	0.3	0.3	0.3	0.4	0.4	0.7	1.8	3.1	3	1.5	0.7	0.5	0.2	0.2	0.3	0.3	0.5	0.5	0.5	0.5	0.5	1.2	2.9
		175	128	0.1	0.1	0.1	0.1	0.2	0.2	0.2	0.3	0.3	0.2	0.2	0	0	1	1	0.7	0.7	0.5	0.2	0.2	0.3	0.3	0.7	1.1	1.6	2.7	3.4	2.7	1.7
		161	0.1	0.1	0.1	0.1	0.1	0.2	0.2	0.2	0.3	0.3	0.2	0.3	0.3	0.3	0.3	0.4	0.4	0.5	0.4	0.4	0.4	0.5	0.5	0.7	0.5	0.5	0.5	0.6	0.5	0.6
		139	0.1	0.1	0.1	0.1	0.1	0.2	0.2	0.2	0.3	0.3	0.2	0.3	0.4	0.4	0.5	0.5	0.5	0.5	0.6	0.5	0.5	0.6	0.6	0.6	0.6	0.6	0.6	0.5	0.6	0.6
		122	0.1	0.1	0.1	0.1	0.1	0.2	0.2	0.2	0.3	0.3	0.3	0.4	0.4	0.4	0.5	0.5	0.5	0.5	0.6	0.5	0.5	0.6	0.6	0.6	0.6	0.6	0.5	0.6	0.6	0.6
		77.6	0.1	0.2	0.1	0.2	0.2	0.2	0.4	0.5	0.6	0.6	0.7	0.7	0.8	0.8	0.8	0.8	0.9	0.9	0.9	0.9	0.9	0.9	0.9	0.8	0.8	0.8	0.8	0.7	0.8	0.7
		0.1	0.1	0.1	0.1	0.1	0.2	0.3	0.5	0.7	0.9	1	1.2	1.2	1.3	1.3	1.4	1.5	1.6	1.5	1.6	1.5	1.5	1.5	1.4	1.4	1.4	1.4	1.4	1.3	1.3	1.2
		0.1	0.1	0.1	0.1	0.1	0.2	0.3	0.7	1	1.3	1.5	1.7	1.8	2	2	2.1	2.1	2.1	2.2	2.1	2.2	2.2	2.1	2	2	1.9	1.8	1.8	1.7	1.7	1.6
		0.1	0.1	0.1	0.1	0.1	0.1	0.1	1	1.4	1.9	2.1	2.6	2.7	2.9	2.9	3	3	3.1	3	3	3	2.8	2.7	2.7	2.6	2.5	2.3	2.3	2.2	2.1	2
		187	194	205	215	220	211	194	2.2	3	3.4	3.9	4.1	4.3	4.5	4.6	4.5	4.3	4.3	4.3	4.1	4	3.7	3.8	3.6	3.5	3.3	3.2	3	2.9	2.8	2.5
		211	224	237	248	255	258	218	3.8	5	5.7	6.4	6.8	6.6	6.6	6.6	6.4	6.3	6.1	5.9	5.8	5.8	5.4	5.2	5.1	4.7	4.4	4.3	3.9	3.8	3.5	3.3
		218	234	248	259	310	336	3.9	7.4	9.4	10.5	10.6	11.1	10.8	10.5	10.6	10	9.7	9.2	8.8	8.5	8	7.6	7.1	6.5	6.5	6	5.7	5.3	5	4.6	4.1
		217	268	277	283	295	333	8.7	11.5	12.3	13.2	13.2	13.3	13.3	12.8	12.7	12	11.7	11.8	11.7	11.2	10.8	10	9.5	8.9	8.2	7.7	7.2	7	6.7	5.8	

21-Feb 8:30am 6.5'		1411	1.5	2.9	2.7	2.3	3	2.6	2.7	2.6	2.7	2.6	2.6	541	879	898	909	918	928	936	944	951	958	965	972	979	985	991	996	1000	999	988	963
1247	1.2	2.9	1.8	2.4	2.1	2.2	2.7	2.7	3	349	556	629	661	680	695	706	715	723	731	739	746	754	762	769	775	780	781	774	748				
1126	793	1.7	1.9	1.9	2.2	2.3	2.7	3	3.3	3.7	3.6	5.2	16.4	73.8	80.9	17.8	5.6	3.9	3.4	3.1	2.7	2.5	2.7	3.3	3.3	2.5	32.7	104	37.5				
1012	724	1.6	1.6	2.2	2.3	2.7	3.4	3.7	4.4	5.2	8	17.5	32.8	34.5	20	9.9	6.4	4.5	3.6	3.3	3.6	3.3	3.6	3.3	3.3	4.6	6.2	14.1	43.1	69.1	46.4		
905	1.8	1.5	2	2.4	2.8	3.5	4.1	4.8	5.9	4.9	0.1	0.1	12.9	13.2	10.2	10.3	6.6	3.3	3.2	2.9	3.3	3.3	6.5	7.9	11.6	20.3	26.1	21.6					
792	1.3	1.8	2	2.8	3.6	4.3	5.3	6.4	6.6	8.1	9.8	10.6	11.2	11.8	11.8	9.5	12.1	12.7	13.3	12.8	12.4	12.5	10	10.5	12.7	12	12.4	11.9					
658	1.6	1.9	2.5	3.2	4.2	5.5	6.6	7.5	8.5	9.4	10.2	11	11.3	11.5	11.5	11.1	12.2	12.4	11.9	11.5	11.8	11.7	10.7	11	10.7	10.5	10.3						
502	1.4	2.4	2.9	3.8	5.2	7.2	8.8	10.5	11.8	12.8	13.5	14	14.4	14.4	14.3	14.4	14.6	15	14.7	14.5	14	14	13.4	13.5	13.4	13	12.8	12.5					
1	1.3	2.4	2.8	4.2	6.9	10.2	13.2	15.6	17.8	18.7	19.8	19.7	19.9	20.1	20.3	20	19.6	20	19.6	19	18.8	18.4	18.3	18.2	17.9	17.3	17.1	17					
0.9	1.2	1.6	2.2	3.8	7.4	13.7	18.9	22.7	25.1	26.5	27.4	27.5	27.8	27.7	27.4	27.2	27.4	26.6	26.5	25.5	25	25.3	24.3	24.3	23.5	23.1	23	22.7					
0.9	1.1	1.2	1.4	2.5	5.1	17.5	28.2	33.7	35.8	37.4	38.2	38.1	38.5	37.5	37.5	36.3	36.4	35.7	34.1	34.1	33.6	33.4	32.4	32.2	31.3	30.7	31.1	30.2					
1492	1332	1175	549	451	336	228	432	47.3	50.5	51.9	50.9	50.9	51.3	48.6	47.8	46.6	44.4	45.6	44	43.6	42.5	41.9	41	40.4	39.2	39	38.9						
1502	1348	1223	1128	487	370	265	58.3	62.1	63.9	66.7	66.1	63	60.5	60.8	57.3	60.1	56.4	55	55.8	51.8	51.7	51.1	49.7	48	47.7	47.3	46.8	46.5					
1437	1328	1224	1133	497	378	63	69.5	72.4	73.5	74.4	75.6	70.7	66.7	66.2	63.6	62.5	60.9	62	61.7	59.2	57.4	55.7	57.3	55.3	52.1	54	52	53.6					
1297	1241	1165	1099	1030	385	69.3	76.7	81.6	82	79.7	84.1	76.7	78.6	71.3	71.9	72.2	69.8	67.8	66.4	67.2	63.5	64.6	61.5	59.6	59.8	59.2	58	58.5					

21-Feb 10:30am 5'		6178	2.6	4.5	4.2	4	4.8	4.6	4.7	4.6	4.6	4.6	4.7	4.6	825	1347	1383	1406	1423	1442	1458	1474	1488	1504	1519	1534	1549	1564	1579	1594	1608	1620	1625	1610
1550	2	4.9	3.8	4.6	4.5	5.2	6.1	6.4	7	7	6.7	8.7	27	123	135	28.3	9.1	7.2	6.3	5.7	5.3	5.4	6	7	7.3	6.2	55.8	175	63.7					
1345	890	4.3	4.7	4.7	5.2	6.3	7	8.2	8.5	9.7	10.2	14.6	30.6	56.9	59.6	35	18.7	12.1	8.1	6.8	6.7	7.4	8.3	10.6	13.5	26.7	76.5	120	81.4					
1166	770	4.6	5.1	6	6.3	7	8.2	8.5	9.7	10.2	14.6	30.6	56.9	59.6	35	18.7	12.1	8.1	6.8	6.7	7.4	8.3	10.6	13.5	26.7	76.5	120	81.4						
1016	5.2	5.4	6.5	7.2	8	9.1	10.2	11.3	12.9	10.7	0.2	0.1	22.6	23.2	18	21.2	13.5	6.5	6.4	5.9	6.8	7.2	15.6	16.9	22.2	37.6	47.7	39.9						
854	5.9	7.3	8	9.4	10.5	11.8	13.3	15	15.2	17.6	20.5	22.1	23	23.9	23.9	21	25.6	26.4	27.4	28	28.2	28.7	23.5	25.2	30.8	31.7	32.1	32.6						
674	8	9.4	10.9	12	13.6	15.1	16.8	18.1	20	21.6	23.2	24.3	25.2	25.8	26	26.1	27.5	28.4	27.7	27.7	28.5	28.6	26.7	27.2	28.1	28.3	28.3	28.2						
470	10.4	13	14.4	15.6	16.9	19.4	21.6	24.4	26.8	28.8	30.3	31.5	32.4	33.2	33.6	33.9	34.2	35.2	35.6	35.4	35.2	34.6	34.7	34.4	34.6	34.7	34.8	34.8						
9.8	13.2	16.5	17.8	19	21	25.1	29.6	34.1	37.6	40.4	42.3	43.7	44.8	45.4	46.1	46.3	46.6	47.3	47.5	47.4	47.1	46.6	46.7	46.6	46.6	46.4	46.3	46.1						
10.9	15	18.4	19.9	20.7	23.2	31.6	40.1	47.3	52.6	56.1	58.5	60.3	61.8	62.6	63.3	63.6	64.3	64.1	64.2	64.1	64.1	64	63.7	63.4	63.6	63.5	63.8	63.5	63.3					
9.7	14	19.6	19.7	17.8	19.3	36.3	57.5	67.4	73.8	78.9	81.6	83.3	85	85.9	86.9	87.1	87.2	87.5	86.9	86.9	86.1	86.3	86.2	86.1	86.1	86.3	86.2	85.3						
5270	5200	5164	5118	5039	553	353	84.9	93.3	101	107	110	113	114	115	116	116	116	116	115	115	115	114	114	114	113	112	113	112	111					
2521	2427	830	2313	2233	558	392	113	121	131	137	141	143	144	146	146	146	146	146	145	144	143	142	142	140	140	139	138	137						
2435	2369	2210	2259	2194	533	147	149	157	167	172	175	178	178	179	179	178	178	178	179	179	178	178	176	175	174	173	171	170	167	166				
755	2266	2320	2175	2138	2057	2013	1804	246	1797	1799	1796	1804	1798	1801	1800	252	1800	1798	1790	1796	1789	1792	1791	242	1788	1784	1778	1782						

21-Feb 12:30pm 4.3'	6623	3.1	4.7	4.4	4.4	5.1	5.5	5.8	5.9	7.95	1329	1396	1434	1461	1484	1506	1527	1546	1567	1586	1606	1625	1644	1663	1683	1702	1720	1735	1742
6376	2.1	5.1	4.6	5.3	5.6	6.2	6.8	7.1	5.9	5.94	882	1003	1043	1068	1091	1109	1128	1146	1164	1182	1199	1216	1234	1252	1270	1289	1306	1318	1315
949	630	5.5	5.9	6	6.8	7.6	8.2	8.9	9	8.6	10.1	28.3	125	137	28.6	9.6	9.2	8.1	6.9	6.2	6.2	6.2	6.7	8	8.9	7.6	58	180	66.5
844	521	6.2	6.8	7.8	8.5	9.2	10.6	11.1	12.3	12.5	16	32.1	58.4	60.9	36	20.3	14.1	9.2	7.8	7.7	8.3	9.1	11.5	15.2	28.8	79.4	124	83.7	
749	6.9	7.7	9	9.9	11	12.4	13.6	14.9	16.6	14.4	0.1	0.1	23.4	24	18.7	24.2	16.4	7.3	7.1	6.5	7.5	8	16.5	18.6	23.4	39.1	49.4	41.4	
624	8.6	10.3	11.8	13.5	14.9	16.5	18.4	20.1	20.5	23.3	27	28.9	30.5	31.3	31.1	26.5	31.2	33.2	34	34.2	34.3	34.2	25.8	29.1	37.4	38.6	39.6	40.9	
477	11.3	13.8	16	18	20.1	22.2	24	25.3	27	28.9	30.7	32	33.1	33.6	33.4	32.9	33.9	34.1	33	31.9	31.8	31	28.5	28.5	29.5	29.7	30	29.6	
278	15	18.4	21.3	24	26.5	29.5	32	34.7	36.8	38.8	40.4	42	43	43.5	43.6	43.3	43	42.2	41.1	39.5	37.9	36.4	35.3	34.7	34.2	34.2	34.2	34.1	
13.5	18.7	23.5	27.2	30.4	33.9	38.9	43.9	48	51.4	54	56.3	58.4	59.5	60.2	60.4	59.3	58.2	56.9	54.9	52.6	50.1	48.5	47.2	45.9	45.4	45	44.8	44.3	
15	21.1	26.9	31.1	34.4	39.4	48.6	58.7	65.9	70.7	74.8	77.8	80.5	82.4	82.9	82.5	82	79.9	76.4	73.6	69.9	67	64.7	62.5	61.2	60.4	60	60	59.2	
13.4	19.7	28.5	31.5	32.7	38.8	57	80.3	91.2	98	103	108	110	112	113	113	112	109	104	98.3	93.6	89.3	86.1	84	82.3	80.6	80.3	79.4	79.5	
5974	6023	6063	6081	6073	6078	5864	114	124	133	140	145	149	151	152	151	149	144	137	130	123	119	114	112	109	106	105	106	105	105
2566	2607	2631	2639	2627	2581	2705	154	163	174	183	189	192	195	195	194	190	185	177	168	159	152	147	144	140	138	136	135	135	135
2517	2546	2562	2562	2552	2516	170	205	213	225	235	239	244	246	244	243	238	232	223	212	204	195	189	186	182	178	178	175	175	175
2443	2463	2468	2454	2463	2468	2159	2186	2187	2203	2211	2203	2218	2217	2212	2216	2205	2204	2198	2175	2179	2169	2159	2162	2151	2153	2151	2138	2150	

21-Feb 2:30pm 4'	622	2.3	3.6	3.3	3.3	3.7	4.1	4.2	4	5.62	952	1044	1101	1135	1158	1179	1197	1215	1233	1249	1266	1282	1298	1314	1330	1346	1361	1375	1385	
521	1.4	3.3	2.9	3.4	3.5	4	4.5	5.1	5.5	5.8	5.5	7	20.4	89.5	98.1	21.3	7.5	6.7	6.3	5.4	5	5.2	6.3	7.6	7.9	7.2	44.5	135	52	
497	391	3.4	3.3	3.4	3.8	4.5	5.1	5.5	5.5	5.8	5.5	8	10.9	22.3	40.8	42.6	25.3	14	9.4	6.6	5.9	6.1	6.8	7.7	9.9	12.8	22.8	59.2	90.6	62.4
480	365	3.5	3.4	4	4.5	5.1	6.2	6.7	7.6	7.6	8	10.9	22.3	40.8	42.6	25.3	14	9.4	6.6	5.9	6.1	6.8	7.7	9.9	12.8	22.8	59.2	90.6	62.4	
454	3.1	3.4	4	4.6	5.3	6.3	7.5	8.6	9.9	8.4	0.1	0.1	16.3	16.7	13.2	17.3	11.2	5.1	5	4.9	5.9	6.7	14.2	15.2	18.2	29.4	36.8	31.3		
398	3.2	3.6	4.3	5.5	6.8	8.3	9.7	11.3	11.7	14.2	17.3	19	20.4	21.5	21.8	18.6	22.8	25.7	27.4	28.5	29.8	30.5	22.7	28.2	38.9	42.6	45.8	47.8		
328	3.4	4.1	5.1	6.7	8.4	10.3	12.1	13.4	15.2	16.7	18.4	19.6	20.7	21.5	22.1	22.2	23.7	24.8	25	25.2	26.5	26.5	25.7	27.1	29.7	31.6	32.8	33.3		
181	3.5	4.4	5.6	7.7	10.2	13.1	15.8	18.1	20	21.8	23.6	24.8	26	26.9	27.7	28.2	28.8	29.8	30.5	30.8	31.1	31	31.5	32.5	33.9	35.1	36	36.7		
2.6	3.5	4.6	6.1	8.5	12.1	16.8	21.4	24.8	27.8	30.3	32.1	33.9	35.4	36.5	37.5	38.2	38.6	39.4	40.2	40.3	40.5	40.8	41.2	41.8	42.8	43.7	44.6	45.2		
2.5	3.5	4.6	6.1	8.6	13.1	21.3	29.1	34.7	38.9	42.2	44.5	46.2	48.2	49.7	50.4	51.5	51.8	52.5	53	53.3	53.4	53.6	53.8	55	55.3	56	56.8	57.6		
2.1	2.9	4.2	5.2	7	11.1	25.8	42	49.7	54.9	59.2	61.6	63.7	65.4	66.9	68.3	68.8	69.1	69.5	69.7	70.2	70.8	70.6	70.7	71.1	71.6	72.5	73.1	73.6		
440	488	545	4568	4598	4595	4532	64.4	71.2	77.5	81.9	84.4	86.7	88.3	89.6	90.5	90.8	91.6	90.9	91	91.1	91.6	91.6	91.6	91.6	91.6	91.7	92.1	92.8	93.4	
470	529	4558	4598	4624	4634	4578	89.6	98.1	106	110	113	115	116	117	118	118	118	118	117	117	116	116	116	116	116	116	116	116	116	
478	1908	1949	1981	2013	2094	109	127	140	148	152	154	154	155	155	155	155	155	155	155	155	155	155	155	155	155	149	148	148	148	
1843	1869	1892	1908	1951	2093	168	1597	1601	1605	1611	1607	1612	1610	1605	1610	1607	1609	1601	1603	1602	1596	1602	1598	1596	1599	1595	1595	1598	1598	

21-Feb 4:30pm 5.3	249	11	1.7	1.7	1.6	1.8	1.9	2	1.8	184	326	375	415	442	461	477	492	507	522	536	550	563	576	589	601	612	622	630	635
	244	0.5	1.3	1.1	1.3	1.3	1.4	1.5	1.4	132	207	257	292	315	331	346	361	376	390	405	419	432	445	458	470	481	491	497	495
	251	197	1.4	1.1	1.2	1.2	1.4	1.5	1.6	1.7	1.8	2.6	7.3	24.9	26.4	8	3.1	2.1	2.1	1.9	1.7	1.7	2.2	2.6	2.7	2.4	17.2	51.7	21.4
	250	189	1.3	1.1	1.2	1.3	1.5	1.7	1.9	2.2	2.3	3.2	5.8	9.4	8.9	5	3.2	2.6	2	1.9	1.9	2.1	2.4	3.1	4	7.6	19.9	29.8	20.6
	235	1.3	1.2	1.2	1.3	1.5	1.8	2	2.3	2.7	2.3	0	0	3	2.7	2.1	4.1	2.7	1.4	1.5	1.5	1.8	2.1	4.2	4.6	5.8	9.3	11.5	9.6
	206	1.1	1.1	1.3	1.5	1.8	2.2	2.5	2.9	3.2	4.2	5.5	6.2	6.7	7.2	7.2	5.8	6.9	8.6	9.2	9.4	9.6	9.6	6.7	8.4	12	12.9	13.9	14.7
	181	1.1	1.3	1.5	1.8	2.3	2.7	3.1	3.5	4	4.5	5.1	5.7	6.1	6.4	6.5	6.6	7	7.5	7.7	7.8	7.9	7.7	7.2	7.6	8.3	8.7	8.9	9
	116	1.2	1.4	1.7	2.1	2.7	3.3	4	4.6	5.1	5.7	6.2	6.7	7.1	7.5	7.8	8	8.3	8.6	8.8	8.8	8.8	8.6	8.6	8.8	9.1	9.3	9.5	9.6
	0.9	1.2	1.5	1.8	2.4	3.2	4.3	5.3	6.2	6.9	7.7	8.2	8.8	9.3	9.8	10.1	10.4	10.6	10.9	10.9	11	10.9	10.8	10.9	11	11.1	11.3	11.5	11.5
	0.9	1.2	1.5	1.9	2.4	3.5	5.4	7	8.5	9.4	10.2	11	11.6	12.3	12.9	13.1	13.5	13.7	13.8	13.8	13.8	13.8	13.8	13.7	13.9	13.9	14	14.2	14.4
	0.8	1	1.4	1.7	2.1	3	6.3	10	11.7	12.8	14	14.8	15.6	16.4	16.9	17.3	17.5	17.7	17.7	17.7	17.6	17.6	17.7	17.6	17.5	17.5	17.6	17.8	17.9
	266	273	288	299	301	289	280	15.4	16.4	17.8	19.1	20.2	20.8	21.8	22.2	22.5	22.8	23	22.6	22.7	22.4	22.6	22.4	22.3	22.2	22.1	22.1	22.5	22.3
	295	312	331	344	350	339	309	21.9	23	24.8	26.5	27.6	28.3	28.8	29.3	29.6	29.7	29.5	29.3	29.1	28.7	28.6	28.6	28.3	28.3	28.1	27.8	28	28
	301	324	344	380	375	395	35.9	32.3	35.3	37.5	38.5	39.7	39.7	40.1	40.6	40.6	40.3	39.7	39.4	39.1	38.6	38	37.9	37.7	37	36.7	36.7	36.8	36.8
	297	315	568	579	604	701	65.2	73.7	73.8	74.8	75.9	75.2	76.2	75.4	74.7	75.5	73.6	73.8	73.8	71.5	72	71	69.9	70.3	68.4	68.7	68.9	67.6	68.6

21-Mar 8:30am 4	1751	2.4	4	3.8	3.4	4.1	3.7	3.8	3.6	655	1040	1061	1073	1083	1095	1105	1114	1122	1131	1140	1148	1156	1164	1171	1177	1179	1175	1154	1112	1067	
	1575	1.4	4.1	2.8	3.5	3.3	3.7	3.9	4.3	406	634	715	753	776	795	808	819	829	839	850	859	869	879	888	895	901	902	889	846	741	
	1437	1015	3	3.1	3.2	3.6	4.4	4.7	5.1	5.5	5.2	6.7	19.2	81.5	88.9	20.8	7.8	5.9	5.2	4.8	4.4	4.4	4.8	4.8	5.7	6	5	38.3	115	42.5	411
	1295	927	2.9	2.9	3.8	4.1	4.9	5.9	6.4	7.2	7.4	9.8	20	36.6	38.5	23.2	13.2	9.3	6.5	5.4	5.2	5.7	6.4	7.9	9.7	17.6	48.8	76.7	52.4	17.7	
	1160	3.6	2.8	3.5	4.4	4.9	6.2	7.3	8.5	9.9	8.7	0.1	0.1	14.6	15	11.8	15.7	10.1	4.7	4.6	4.4	5.1	5.4	11.7	12.2	14.6	24.1	30.4	25.6	16.7	
	1026	2.8	3.3	3.7	5.1	6.4	8.1	9.6	11.5	12.2	14.7	17.4	18.6	19.6	20.2	20.1	17.2	20.4	21.9	23.1	23.7	24.3	24.5	19.1	22	27.8	28.8	29.6	30.1	30.3	
	868	3.2	3.5	4.4	6.1	7.7	10	12.2	14	16.2	17.9	19.6	20.5	21.1	21.5	21.3	22.2	22.8	22.6	22.6	23.5	23.4	22.6	23	24	24.4	24.5	24.2	23.5		
	665	2.7	4.1	5.1	6.9	9.1	12.8	16.3	19.3	21.9	24.1	25.9	26.8	27.4	27.6	27.4	27.5	27.9	28.2	28.3	28.6	28.5	28.8	29.1	29.5	29.5	29.3	29.2	28.8		
	1.8	2.2	3.9	5	7.3	11.3	17.1	22.8	27.7	31.5	34.3	36.1	37.5	38	38.2	37.9	37.6	37.2	37.3	37.5	37.6	37.9	38.4	38.6	39	39.1	39.3	39.2	38.9	38.4	
	1.6	2	2.7	3.9	6.9	12.2	22.4	32.4	39.6	44.8	48.6	50.6	51.6	52.5	52.4	51.7	51.3	50.5	50.4	50.7	50.8	51.4	51.9	52.8	52.7	53	52.8	52.7	52.2		
	1.5	1.8	2.2	2.6	4.5	9	29	49	58.7	64.4	68.5	70.1	71	71.1	70.9	70.4	69.3	68.6	67.9	67.5	67.9	68.7	69	69.4	69.7	70.3	70.7	70.5	70.2	69.5	
	4231	3998	845	726	584	424	281	78.3	85.2	91.6	94.7	95.7	96.2	95.4	94.5	93.7	92.4	91.6	90	89.7	90.2	90.7	91	91.3	91.2	91.5	91.3	91.4	91.1	90.2	
	2408	2167	1992	788	634	469	325	114	120	126	128	128	127	125	124	122	121	120	118	117	117	117	118	117	117	117	116	116	115	114	
	2293	2131	1982	1851	645	477	165	163	167	171	170	169	167	164	162	159	158	156	154	154	152	152	152	152	152	150	150	149	148	146	
	2077	1985	1881	1792	1693	488	1800	1320	1303	1307	1300	1301	1300	1291	1294	1289	1285	1289	1281	1283	1284	1277	1283	1279	1276	1280	1272	1276	1276	1268	
21-Mar 10:30am 2.75	7843	3.3	5.1	4.8	4.9	6	6.2	6.7	6.7	857	1381	1423	1448	1468	1489	1508	1525	1541	1558	1575	1591	1607	1623	1639	1654	1668	7598	7600	7578	1571	
	7602	2.1	5.4	4.3	5.3	5.6	6.5	7.2	7.7	532	859	970	1013	1041	1064	1082	1100	1116	1132	1149	1165	1181	1198	1214	1246	1259	1263	1239	1103		
	1500	1003	4.8	5	5.4	6.4	7.7	8.6	9.5	10.1	9.6	10.9	28.1	118	128	29.9	12.8	11.6	10.2	9.1	8.5	8.5	9.2	11.1	11.9	10	56.3	167	62.8	587	
	1314	859	4.8	5.2	6.5	7.5	9	10.9	12	13.4	13.5	16.1	31	55.2	57.9	35.9	22.7	17	11.9	10.3	10.2	11	12.2	15.5	18.5	29.4	74.8	115	79.2	28.7	
	1155	5	5	6.1	7.5	9.1	11.5	13.7	16	18.4	16.8	0.2	0.2	22.5	23.2	18.6	28.7	19.5	8.7	8.4	9.4	10.3	22.6	22.7	24.4	38.3	47.7	40.6	27.8		
	987	4.8	5.6	6.8	9.1	11.5	14.8	18.1	21.5	23.5	28.2	33.7	36.5	38.5	40	40.1	34.8	40.7	45.4	47.4	48.7	49.7	49.5	37.5	43.5	55.1	56.8	57.7	58.6	59.2	
	787	5.2	6	7.9	10.6	14.3	19	23.6	27.3	31.3	34.7	37.7	40.1	41.5	42.5	42.9	43	44.9	46.5	46.5	46.8	47.3	47.1	44.8	45.6	47.3	48	47.9	47.4	46	
	544	4.7	6.5	8.7	12.5	17.3	24.6	31.6	37.8	43.1	46.9	49.9	52.4	53.9	55.3	55.8	56.1	57	58.3	58.7	58.5	58.4	57.9	57.6	57.6	57.9	57.7	57.4	57	55.6	
	2.9	4	6.3	8.7	13.3	20.9	33	44.3	53.7	60.9	66.3	69.6	72.2	74	75.4	76.3	76.8	77.3	78	78.7	78.4	78.2	78.2	77.6	77.2	77	76.2	75.6	74.1		
	2.6	3.6	5.1	7.5	13	22.9	43.2	63.3	76.9	86.6	92.9	97	99.9	102	104	105	106	106	106	106	106	106	106	105	105	105	104	103	102	101	
	2.3	3	3.9	5.5	9.4	18.2	54.4	95.2	113	124	131	135	138	140	142	143	143	143	143	143	143	143	143	142	142	141	140	139	138	136	
	7037	6944	6899	6848	6758	6581	401	150	162	173	180	184	187	188	190	191	191	189	189	189	189	189	187	187	186	184	184	183	181	178	
	7113	6998	6922	6858	6763	670	447	215	225	234	240	242	244	243	244	244	244	244	243	242	242	241	240	239	236	235	233	231	229	225	
	3174	3092	3018	2957	2874	2717	286	305	303	309	310	311	312	309	311	310	307	308	305	305	302	302	302	300	297	295	293	290	288	282	
	2977	2941	2886	2832	2794	2681	2804	2521	2474	2483	2479	2473	2480	2471	2477	2477	2463	2477	2472	2467	2474	2464	2470	2469	2454	2467	2461	2455	2460	2448	

21-Mar 4:30pm shades up	287	31	4.8	5.5	5.9	6.4	6.9	7.1	6.2	193	374	437	486	519	538	554	568	581	594	2656	2666	2676	2684	2692	2699	2706	2713	2717	2719	2715	
	285	1.1	4.3	4.4	4.9	5.2	5.6	5.9	5.5	134	221	289	338	368	386	401	417	432	2497	2511	2523	2536	2547	2558	2568	2578	2586	2591	2587	2550	
	295	237	4.9	4.5	4.9	5.3	5.8	6.3	6.8	7	6.3	6.5	10.5	26.8	30.6	15.6	10.1	7.9	7.8	6.9	6.4	6.4	8.7	10.3	9.5	8.8	19.7	51	24.7	266	
	296	231	4.8	4.6	5.3	5.9	6.7	7.5	8.2	8.9	7	6.6	9.2	12.7	12.6	9.8	10.7	9.1	7.1	6.7	6.9	7.4	8.7	11.7	11.7	13.6	21.7	28.6	22.4	13.9	
	280	4	4.2	4.8	5.8	6.8	7.9	9.1	10.3	11.7	11.8	0.1	0.1	6.1	6	5.5	15.8	10.5	5	5.2	5.5	5.9	6.8	15.2	13.1	10.5	12.9	14.1	12.8	11.1	
	250	3.3	3.8	5	6.5	8	9.6	11.3	13.1	15.3	19.8	25.2	27.9	29.6	30.8	30.2	24.4	27.7	34.6	36.8	38	39.3	38.9	26.1	34	45.9	48.1	49.9	50.8	52.2	
	224	3.3	3.7	5.1	6.9	9.2	11.3	13.5	15.7	18.1	20.8	23.5	25.6	26.8	27.4	27.4	26.8	27.6	29.2	30.1	30.7	31.1	30.5	29.2	30.4	32.7	33.7	34.2	34	32.5	
	148	3.1	3.6	4.8	7.2	10.3	13.4	16.2	19	21.5	23.9	26	27.7	28.9	29.6	29.9	30.1	30.7	31.4	32.1	32.5	32.7	32.5	32.4	32.8	33.6	34.1	34.3	34	33.4	
	2.2	2.6	3.4	4.6	6.9	11.1	16	20.1	23.5	26.3	28.7	30.4	32	33.1	33.9	34.5	35	35.4	36.1	36.5	36.8	37.1	37.1	37.1	37.1	37.5	37.9	38.2	38.2	38	37.8
	1.9	2.4	3.1	4.3	6.3	10.8	19.3	26	30.5	33.3	35.4	37.2	38.5	39.7	40.6	41.1	41.6	42.2	42.5	43	43.3	43.4	43.5	43.7	43.9	44.1	44.3	44.3	44.3	44.1	
	1.5	2	2.8	3.6	5.2	8.3	23	36.7	41.2	43.9	45.9	47.4	48.6	49.8	50.6	51.2	51.6	51.9	52.3	52.5	52.7	53.1	53.1	53.2	53.3	53.3	53.4	53.5	53.3	53.2	
	311	314	327	334	332	320	289	56.6	57.3	59.3	61.4	62.7	63.8	65.1	65.5	65.9	66.1	66.5	66.4	66.5	66.6	66.9	66.9	66.9	66.9	66.6	66.7	66.9	66.6	66.5	
	341	360	380	393	395	382	355	77.8	78.9	81.3	83.5	85.2	85.9	86.7	87.2	87.5	87.8	87.4	87.5	87.6	87.2	87.2	87.5	86.9	87	86.9	86.4	86.6	86.1		
	345	371	393	408	410	395	96.3	104	110	114	116	118	118	118	118	118	117	117	116	116	116	115	115	115	114	114	113	113	112		
	335	356	373	381	385	375	128	153	157	160	161	159	160	158	157	158	155	155	155	152	152	153	152	150	151	148	149	149	147	146	

21-Apr 8:30am shades up		1812	3.4	5.1	5.1	4.9	5.9	5.8	6.3	6.2	7.25	10.96	11.20	11.33	57.60	57.72	57.83	57.92	58.00	58.09	58.17	58.25	58.32	58.39	58.45	58.48	58.49	58.41	58.12	11.34
1687	1.5	5.2	4	5	5.1	5.8	6.8	7.6	8.2	9.1	8.9	9.7	21.3	75.7	81.6	22.8	12.3	10.6	9.4	8.7	8.1	7.9	8.2	9.8	10.6	9.1	39.5	107	40.7	
1571	10.95	4.3	4.3	4.8	5.6	6.8	7.6	8.2	9.1	17	16.3	0.2	0.2	14.4	15	12.5	24.6	16.8	6.9	7	6.9	7.5	8.3	19.2	17.8	16.5	24.3	29.7	25.8	
1417	9.99	4.5	4.5	5.6	6.5	7.9	9.5	10.2	12.3	14.5	17	16.3	0.2	0.2	14.4	41	40.3	33.9	38.6	44.4	46.7	47.6	48.4	47.7	34.5	41.7	53.3	55.2	56.2	57
1254	5.3	4.5	5.3	6.6	8	10.4	13.4	16.5	19.8	22.7	28.3	34.6	37.8	39.8	41	40.3	33.9	38.6	44.4	46.7	47.6	48.4	47.7	34.5	41.7	53.3	55.2	56.2	57	
1108	4.7	5.1	5.9	8	10.4	13.4	16.5	19.8	22.7	28.3	34.6	37.8	39.8	41	40.3	33.9	38.6	44.4	46.7	47.6	48.4	47.7	34.5	41.7	53.3	55.2	56.2	57		
943	5.3	5.6	7.1	9.6	13.1	17.5	21.6	25.6	29.8	33.8	37.4	39.8	41.2	41.6	41.3	40.7	41.8	43.3	43.7	43.9	44.1	43.3	41.2	42.3	44.4	45.4	45.7	45.3		
711	4.5	6.4	8.2	11.6	16.4	23.2	29.4	35.2	40.1	44.2	47.1	49.1	50.1	50.4	50.2	50	50.2	50.8	51.2	51.2	50.9	50.3	49.9	50.1	50.7	51.2	51.2	50.9		
2.5	3.3	5.7	8.2	12.5	20.4	31.5	41.5	49.7	55.8	60	62.5	63.9	64.4	64.3	63.9	63.4	63.3	63.5	63.5	63.3	63	62.7	62.4	62.6	62.7	63	62.9	62.6		
2.3	2.9	4.1	6.2	11.8	22.5	42.7	59.8	71.4	78.4	82.5	84.4	84.9	84.6	83.7	82.5	81.8	81.3	80.8	80.7	80.5	80.3	80	79.8	79.7	79.7	80	80.1	80.1		
2	2.5	3.3	4.4	7.6	15.3	56	91.3	105	112	115	115	114	112	110	108	107	106	105	105	104	104	104	104	104	103	103	104	104		
6049	57.88	56.42	55.01	7.08	50.2	32.4	147	153	158	158	156	153	149	146	143	141	139	137	137	137	137	136	136	136	135	135	135	136		
6239	59.59	57.58	55.86	7.76	55.7	37.7	218	220	219	214	208	202	197	192	188	186	183	181	180	179	179	178	178	177	177	176	177	177		
1515	13.01	11.22	9.62	7.72	5.60	3.02	3.25	3.05	2.91	2.79	2.70	2.62	2.55	2.49	2.45	2.41	2.39	2.36	2.35	2.33	2.32	2.31	2.30	2.29	2.28	2.28	2.27	2.27		
2769	26.39	25.10	23.98	22.70	5.54	2.583	4.73	1.912	1.888	1.867	1.861	1.853	1.841	1.842	3.00	1.830	1.831	1.823	1.825	1.825	1.819	1.823	2.85	1.817	1.820	1.813	1.816	1.816		

21-Apr 10:30am shades up		9179	3.6	5.3	5.2	5.4	6.5	6.9	7.6	7.5	8.71	13.69	8.747	8.774	8.794	8.814	8.833	8.849	8.864	8.880	8.895	8.910	8.924	8.938	8.951	8.963	8.975	8.982	8.981	8.953
9023	1.9	5.5	4.6	5.6	6.1	7	7.8	8.2	9.2	10.2	11.2	10.8	11.6	26.4	1.01	1.10	28.9	15.3	14.4	12.8	11.5	10.8	10.8	11.4	13.8	14.9	12.6	52.4	146	56.6
8891	8.93	5	5.1	5.6	6.7	8.2	9.2	10.2	11.2	10.8	11.6	26.4	1.01	1.10	28.9	15.3	14.4	12.8	11.5	10.8	10.8	11.4	13.8	14.9	12.6	52.4	146	56.6		
1385	9.05	5.1	5.3	6.6	7.8	9.5	11.6	12.9	14.5	14	15.3	27.7	4.77	5.03	33.2	24.2	19.6	14.2	12.7	12.7	13.5	14.9	18.7	21	28.9	65.4	98.1	69.2		
1214	5.2	5.1	6.2	7.6	9.5	12.2	14.7	17.3	20.3	19	0.2	0.2	19.7	20.5	17.2	32.8	22.7	9.7	9.7	9.6	10.6	12	27.3	25.5	23.8	35	42.7	37.2		
1058	5.1	5.7	6.8	9.2	12	15.7	19.5	23.4	26.6	33.4	41.3	45.9	49.4	51.9	51.9	44.7	51.6	59.7	63	64.7	66.1	65.6	48.2	58	74.1	76.8	78.4	79.5		
863	5.4	6.1	7.9	10.7	14.9	20.2	25.2	29.7	34.6	39.5	44.1	47.9	50.8	52.7	53.5	53.8	56.1	58.8	59.8	60.5	61.2	60.5	57.9	59.6	62.7	64.2	64.7	64.3		
574	4.8	6.5	8.6	12.5	18.1	26.2	33.5	40.1	46	51	55.3	58.8	61.8	63.9	65.2	66.2	67.6	69.3	70.5	71	71	70.5	70.4	70.8	71.9	72.6	72.7	72.4		
2.8	3.8	6	8.5	13.2	21.6	34.4	46	56.6	63.1	68.8	73	76.5	79.5	81.6	83.2	84.3	85.4	86.7	87.6	88.1	88.2	88.1	88.6	89	89.5	89.5	89.2			
2.6	3.4	4.8	7.1	12.5	22.9	45	64.7	78.5	87.6	93.9	98.4	102	105	107	108	109	110	111	112	112	112	113	113	113	114	114	114			
2.3	2.9	3.8	5.3	8.9	17	56.6	97.3	114	124	140	134	137	139	141	142	143	143	144	144	144	145	145	146	146	146	146	147	147		
8582	84.72	84.23	83.67	82.74	80.81	4.38	1.56	1.66	1.75	1.80	1.83	1.85	1.86	1.87	1.88	1.88	1.89	1.89	1.89	1.89	1.90	1.90	1.91	1.90	1.90	1.90	1.90	1.91		
8677	85.66	84.87	84.17	83.17	81.13	4.91	2.31	2.37	2.43	2.45	2.46	2.47	2.47	2.48	2.48	2.47	2.47	2.47	2.47	2.47	2.47	2.47	2.47	2.47	2.46	2.46	2.46	2.46		
8568	84.91	84.19	83.52	82.57	7.30	3.09	3.43	3.35	3.34	3.31	3.29	3.29	3.26	3.27	3.26	3.23	3.24	3.21	3.20	3.21	3.18	3.19	3.18	3.16	3.16	3.15	3.14	3.14		
3521	34.86	34.33	33.79	33.19	3.185	3.272	3.008	2.952	2.954	2.945	2.939	2.944	2.933	2.939	2.938	2.926	2.937	2.931	2.927	2.933	2.923	2.929	2.929	2.918	2.928	2.923	2.919	2.924		

21-Apr 12:30pm shades up	9189	3.6	4.8	4.6	4.9	5.8	6.6	7.2	7.3	700	9266	9361	9404	9432	9455	9494	9512	9530	9546	9563	9579	9594	9609	9623	9637	9650	9658	9657		
	9061	1.8	4.9	4.5	5.2	5.9	6.8	7.6	8	439	745	864	909	940	967	991	1015	1040	1064	1088	1111	1135	1157	1180	1203	1227	1247	1263	1259	
	9002	8757	5.2	5.2	5.6	6.6	7.9	9	10	10.9	10.6	11.2	24.6	93.4	103	27.8	14.8	14.9	13.5	11.9	11.2	11.5	12.3	14.9	16.2	14	50.1	14.1	57	
	8937	8641	5.3	5.5	6.5	7.8	9.3	11.2	12.5	14.1	13.5	14.7	26	44.2	46.5	31.2	23.5	19.6	14.2	13	13.2	14.2	15.8	19.8	22.6	29.7	63.3	93.4	66.8	
	8857	4.8	5.3	6.2	7.4	9.4	11.7	14.1	16.5	19.2	18	0.2	0.1	18.4	19.1	16.2	32.6	22.8	9.8	9.9	9.9	10.9	12.7	28.7	26.9	24	34.4	41.5	36.5	
	8757	5.1	5.6	6.8	9	11.7	15.1	18.6	22.1	25.1	31.2	38.6	43.6	47.8	51.1	51.8	45	52.7	62	66	68.1	69.9	69.5	50.8	61.8	79.4	82.5	84.6	86	
	8617	5.2	5.9	7.6	10.3	14.3	19.1	23.9	28.1	32.6	37.1	41.7	45.7	49.1	51.4	52.9	53.9	57	60.5	62.2	63.3	64.3	63.7	61.2	63.1	66.8	68.5	69.3	69	
	303	4.6	5.9	8	11.8	17.1	24.5	31.4	37.9	43.5	48.5	52.9	56.8	60	62.5	64.5	66.3	68.6	71.2	73.1	74	74.4	74.2	74.1	74.8	76.2	77.2	77.6	77.3	
	2.8	3.8	5.3	7.9	12.4	20	31.5	42.7	52.2	59.7	65.9	70.6	74.5	77.7	80.3	82.6	84.6	86.6	88.8	90.5	91.5	92.1	92.3	92.6	93.4	94	94.7	94.9	94.7	
	2.6	3.4	4.5	6.9	11.7	21.3	40.4	59.3	73.1	83	90.3	95.6	99.7	103	106	108	110	111	113	115	116	117	118	118	119	119	120	120	120	
	2.1	2.6	3.6	5.1	8.7	16.5	49.2	88	105	117	125	131	134	138	141	143	144	145	147	148	150	151	152	153	154	154	154	154	154	
	8803	8866	8917	8939	8926	8855	8649	139	152	163	172	177	181	185	187	189	190	191	191	193	195	197	198	198	198	198	199	199	199	
	8847	8922	8970	8989	8976	8902	8706	200	213	225	233	238	241	244	246	248	249	249	250	251	252	253	255	255	254	254	254	253	254	
	8819	8883	8920	8932	8921	8854	230	282	297	307	314	316	319	320	321	323	321	323	321	322	322	322	321	323	323	321	320	321	318	318
	691	731	751	750	756	743	330	389	390	400	404	398	408	405	402	408	400	404	404	395	405	401	397	403	395	398	396	387	394	

21-Apr 2:30pm shades up	628	3.9	6.1	6.6	7	7.8	8.5	8.9	8.2	412	834	7393	7459	7493	7513	7529	7544	7557	7571	7582	7594	7606	7616	7627	7637	7647	7657	7664	7667	
	594	1.6	5.6	5.6	6.3	6.9	7.6	8.2	8.1	277	500	630	691	726	751	773	795	816	836	857	7293	7313	7331	7349	7367	7384	7399	7411	7410	
	603	522	6.2	5.9	6.5	7.3	8.3	9.2	10.1	10.8	10.2	10.7	18.7	59.7	68.8	25.4	14.9	13.5	12.9	11.4	10.7	10.8	12.9	15	14.4	12.7	34.7	97.3	43.3	
	604	501	6.3	6.2	7.2	8.3	9.6	11.3	12.6	14	12.2	12.3	18.9	29.2	30.6	22.2	19.6	16.5	12.8	12	12.1	12.8	14.3	17.9	18.6	22.6	41.7	58.9	44.1	
	585	5.4	5.9	6.8	8.1	9.8	11.8	14	16.3	18.9	18.7	0.2	0.2	13.9	14.2	13	27.6	19.4	9.8	9.7	10.1	10.8	11.9	23.9	21.4	18.2	23.8	27.5	24.6	
	542	5.1	5.8	7.3	9.5	12	15	18.2	21.6	25.2	32.3	40.4	44.6	47.3	49.1	48.2	39.9	45	53.6	56.3	57.7	59	58.2	40.6	51	67	70	72.4	74.1	
	6903	5.2	6	7.9	10.7	14.4	18.4	22.7	26.8	31.4	36.1	40.6	43.9	46	46.9	46.7	45.7	46.7	48.5	49.1	49.4	49.7	48.7	46.4	48	51.1	52.7	53.7	54	
	280	4.9	6	7.9	11.7	16.8	22.7	28.6	34.2	39.3	43.8	47.7	50.7	52.7	53.7	53.9	53.7	53.8	54.3	54.5	54.4	54	53.4	52.9	53.4	54.4	54.4	55.3	56.1	56.4
	3.3	4.3	5.6	7.9	12	19	28.2	37	44.5	50.5	55.6	59.3	62.3	64.3	65.2	65.5	65.3	64.9	64.7	64.3	63.7	63.2	62.7	62.3	62.6	63.1	63.8	64.4	64.9	
	3	4	5.2	7.4	11.4	19.7	35.1	49.4	59.6	66.6	72	76.2	79.1	81.2	82.1	81.9	81.4	80.6	79.3	78.3	77.2	76.3	75.7	75.2	75.2	75.5	76.1	76.7	77.6	
	2.4	3.2	4.6	6.1	9.4	16.2	42.5	70.6	82.2	90	95.8	100	103	105	106	105	104	102	100	97.8	96.1	94.9	94	93.3	93.1	93.1	93.5	94.5	95.4	
	532	566	615	654	674	7082	7012	108	115	123	129	134	137	139	139	138	135	132	128	125	123	121	119	119	118	117	118	119	120	
	558	625	688	738	764	7171	7104	149	158	167	174	178	181	182	182	180	177	172	168	164	160	158	156	155	154	153	154	154	155	
	558	634	695	740	7181	7169	168	199	216	226	232	236	237	238	237	234	230	225	211	208	211	208	206	204	202	201	201	201	202	
	531	7000	7042	7066	7090	7135	222	285	6715	6720	6725	6722	6726	6724	6720	6721	6713	6709	6706	6697	6696	6692	6686	6688	6683	265	265	261	263	

21-Apr 4:30pm shades up	314	37	57	67	7.1	7.7	8.2	8.4	7.2	179	399	467	514	542	3652	3663	3673	3681	3689	3696	3703	3709	3714	3718	3722	3725	3727	3727	3722
	319	1.2	52	5.4	5.9	6.3	6.7	6.9	6.4	120	215	303	365	399	3511	3524	3538	3551	3553	3574	3585	3595	3604	3613	3621	3628	3633	3634	3625
	333	274	59	5.5	5.9	6.4	6.9	7.4	7.9	8.1	7.2	7.3	10.1	21.9	28.8	19.9	12.4	9.1	8.8	7.9	7.4	7.4	10.1	11.9	10.6	9.5	16.3	59.6	57.6
	337	272	59	5.7	6.4	7.1	7.9	8.8	9.6	10.2	7.7	6.9	8.4	10.5	10.9	9.9	12	10.1	8.2	7.8	8	8.6	9.9	13.1	12	12.5	16.7	21	19
	322	4.7	5.1	5.8	7	8.1	9.4	10.6	11.9	13.4	13.6	0.1	0.1	5.8	5.9	5.9	17.6	11.5	5.9	6.3	6.7	7.6	16.5	13.4	10.1	11.1	11.5	10.9	
	294	4	4.5	5.9	7.7	9.5	11.4	13.2	15.2	17.7	22.9	29	31.9	33.8	34.9	34	27.3	30.9	38.4	40.8	42	43.3	42.5	28.2	37	49.7	51.7	53.3	54
	270	3.9	4.3	6	8.2	10.9	13.3	15.8	18.3	21	24	27	29.1	30.3	30.8	30.6	29.8	30.5	32.1	33.1	33.7	33.9	33.1	31.6	32.9	35.2	36.2	36.6	36.2
	185	3.6	4.2	5.5	8.4	12.1	15.6	18.9	22	24.8	27.3	29.6	31.2	32.3	32.8	32.9	33	33.3	34.1	34.7	35	35	34.8	34.6	35	35.7	36	36.1	35.7
	2.4	3	3.8	5.2	7.9	13	18.7	23.5	27.2	30.2	32.6	34.3	35.6	36.5	36.9	37.3	37.5	37.7	38.3	38.6	38.7	38.9	38.9	38.8	39.1	39.4	39.6	39.5	39.3
	2	2.7	3.4	4.7	7.1	12.5	22.6	30.4	35.4	38.2	40.1	41.5	42.4	43.1	43.6	43.6	43.8	44.1	44.3	44.5	44.6	44.7	44.7	44.8	44.9	45	45.2	45.1	45
	1.6	2.2	3	4	5.8	9.5	27.2	43.4	48	50.2	51.6	52.4	52.9	53.3	53.4	53.4	53.3	53.4	53.4	53.3	53.4	53.7	53.7	53.7	53.7	53.6	53.7	53.8	53.5
	357	365	367	372	366	349	309	67.1	66.6	67.5	68.4	68.5	68.5	68.7	68.1	67.7	67.2	67.1	66.7	66.6	66.7	66.9	66.8	66.7	66.7	66.3	66.4	66.5	66.2
	389	412	436	453	456	441	404	91.3	90.4	90.9	91.3	91.3	90.5	89.8	89	88.2	87.8	87	86.7	86.7	86.2	86.3	86.6	86	86	85.8	85.2	85.4	85.1
	388	420	449	469	476	460	113	119	122	123	123	122	121	119	118	116	116	115	114	113	113	113	113	113	112	111	111	111	110
	369	397	422	438	448	440	145	165	166	167	167	163	163	160	157	157	153	153	152	149	151	149	148	149	146	146	146	144	144

21-May 8:30am shades up		1728	3.3	5	5	4.9	5.8	5.8	6.3	6	6177	6509	6532	6543	6551	6562	6570	6577	6583	6589	6595	6601	6605	6610	6613	6614	6613	6604
	1651	1.4	5	3.9	4.8	5	5.6	6	6.2	419	603	674	715	742	764	780	795	809	823	836	849	862	874	885	885	885	885	885
	1573	1090	4.1	4.2	4.7	5.4	6.5	7.2	7.7	8.6	8.5	9.4	19.8	63.4	67.2	20.8	12.4	10.8	9.6	8.8	8.2	8.3	8.6	10.1	10.9	10.9	9.6	36.9
	1438	998	4.3	4.3	5.4	6.2	7.5	9	10	10.9	10.1	10.3	17.3	28.4	30.1	21.2	16.8	14.3	10.7	9.5	9.3	9.8	11	13.3	14.3	18.2	38	
	1259	998	5	4.3	5	6.3	7.5	9.5	11.4	13.4	15.6	15.2	0.1	0.1	12	12.5	10.8	23.6	16.3	6.8	6.9	7.5	8.4	19.3	17.3	14.7	20.6	
	1110		4.5	4.8	5.6	7.6	9.7	12.4	15.2	18.1	20.9	26.4	32.6	36	38.3	39.5	33.7	38.4	44.9	47.4	48.6	49.5	48.8	35	42.7	54.6	56.5	
	956		4.9	5.2	6.6	8.8	12	15.9	19.6	23.2	27.1	31.1	34.8	37.5	39.3	40.3	40.5	40.4	41.8	43.8	44.5	45	45.2	44.3	42.3	43.3	45.6	46.6
	715		4.2	5.9	7.5	10.5	14.7	20.7	26.2	31.3	35.9	40	43.2	45.7	47.4	48.5	49	49.4	50.3	51.3	52.1	52.3	52.1	51.6	51.2	51.4	52	52.4
	24		3.1	5.3	7.3	11.1	17.8	27.4	36	43.1	48.9	53.3	56.4	58.8	60.4	61.5	62.1	62.6	63.1	63.9	64.4	64.5	64.5	64.2	63.9	64.1	64.2	64.4
	2.2		2.7	3.8	5.5	10.4	19.3	36.2	50.8	60.8	67.4	72	75.1	77.1	78.8	79.7	80.1	80.5	80.9	81.3	81.7	81.9	81.9	81.8	81.6	81.5	81.5	81.7
	1.9		2.3	3.1	3.9	6.7	13.3	46.8	76.5	88.1	94.7	98.8	101	103	104	104	105	105	105	105	105	106	106	106	106	106	105	105
	6956	6690	6528	6384	755	531	337	122	128	133	136	137	138	138	138	138	138	138	138	137	137	138	138	138	138	137	137	137
	7172	6889	6682	6504	849	600	396	179	182	184	185	184	183	182	182	181	181	181	180	179	179	179	179	179	179	178	178	177
	7101	6860	6672	6502	848	606	254	255	253	249	245	242	239	237	236	235	233	233	231	231	231	231	230	229	229	227	226	225
	2984	2818	2674	2546	2396	584	2425	1981	1937	1928	1916	1914	1912	1905	1908	1903	1900	1903	1903	1897	1898	1898	1893	1897	1893	1890	1892	1885

21-May 10:30am shades up		9716	3.6	5.4	5.3	5.5	6.5	7	7.6	7.5	8854	9313	9358	9383	9400	9417	9432	9445	9457	9470	9481	9493	9504	9514	9524	9533	9540	9544
	9620	1.8	5.4	4.7	5.7	6.2	7.1	7.8	8.1	476	741	838	883	914	942	965	988	1009	1031	1052	1073	1094	1114	1134	1154	1154	9170	9184
	1389	919	5.3	5.5	6.8	8	9.7	11.7	13.1	14.6	13.7	14.3	24.1	39.9	42.1	29.1	22.9	19.3	14.3	13	13	13.8	15.2	18.8	20.5	26.3	54.8	
	1206		5.4	5.3	6.4	7.9	9.7	12.4	14.9	17.5	20.6	19.9	0.3	0.2	16.8	17.6	15.1	32	22.4	9.6	9.7	10.6	12.1	27.1	24.7	21.5	30.2	
	1056		5.3	5.9	7.1	9.5	12.3	16	19.8	23.8	27.5	34.7	42.9	47.5	50.8	53.2	53	45.6	52.1	60.6	63.9	65.7	67.1	66.3	48.4	58.7	74.7	77.4
	883		5.6	6.2	8.1	11	15.2	20.4	25.5	30.3	35.7	41.1	46.1	50	52.7	54.3	55	55.1	57.2	59.9	61	61.8	62.4	61.5	58.9	60.5	63.7	65.2
	576		4.9	6.7	8.9	12.8	18.4	26.3	33.7	40.6	47	52.7	57.4	61.1	63.8	65.7	66.9	67.8	69.1	70.6	71.8	72.4	72	71.7	72.1	73.1	73.7	
	3		4	6.2	8.8	13.6	21.9	34.3	45.8	55.5	63.4	69.9	74.8	78.6	81.4	83.5	85	86	87.1	88.2	89.1	89.6	89.8	89.7	89.7	90.1	90.3	90.7
	2.8		3.7	5.1	7.5	13	23.5	44.5	63.7	77.2	86.6	93.9	99.3	103	106	108	110	111	112	113	113	114	114	114	114	115	115	
	2.5		3.2	4.2	5.8	9.7	18.1	55.9	94.8	111	121	128	134	137	140	142	144	145	145	146	146	147	148	148	148	148	148	148
	9297	9182	9124	9066	8973	8778	459	150	160	169	175	180	183	185	187	189	190	190	190	190	190	191	192	192	192	191	191	191
	9415	9306	9226	9153	9049	8836	519	217	224	231	235	238	240	242	244	245	246	246	246	246	246	246	246	246	245	245	244	244
	9332	9250	9179	9111	9009	8836	284	305	308	312	312	313	314	314	315	315	314	314	315	315	315	313	313	311	310	308	307	306
	3678	3634	3579	3523	3454	693	3228	3025	2999	3004	2999	2996	3001	393	2998	2998	2988	2988	2997	2992	2988	2993	384	2987	2986	2976	2983	2977

21-May 12:30pm shades up	9712	3.6	5	4.9	5.2	6.1	7	7.6	7.6	64.6	97.98	98.90	99.29	99.53	99.72	99.88	100.03	100.17	100.31	100.44	100.57	100.69	100.80	100.92	10.103	10.113	10.121	
	9634	1.7	5	4.7	5.5	6.2	7.1	7.9	8.1	39.6	68.9	80.5	85.3	86.6	91.4	93.9	96.6	99.1	101.7	104.2	106.6	96.84	97.07	97.30	97.51	97.72	97.91	
	9605	9383	5.3	5.3	5.8	6.9	8.2	9.3	10.3	11.4	11	11.5	22.2	76.8	85.7	26	15	14.8	13.4	11.8	11	11.1	11.8	14.2	15.1	12.9	42.8	
	9658	9291	5.5	5.7	6.8	8.1	9.7	11.7	13.2	14.7	13.7	13.9	22.5	36.4	38.2	27	22.3	19.1	14.1	12.9	12.9	13.6	14.9	18.4	20.4	25.3	50.5	
	9482	5	5.5	6.5	7.8	9.8	12.3	14.8	17.5	20.5	19.9	0.2	0.2	15.6	16.3	14.2	31.6	22.4	9.5	9.6	9.6	10.4	11.8	26.1	24.1	20.2	27.8	
	9391	5.3	5.8	7.2	9.5	12.3	15.9	19.7	23.7	27.5	34.8	43.2	48	51.4	53.8	53.6	45.9	52.1	61	64.2	65.7	66.7	65.4	46.5	56.2	71.5	73.3	
	9275	5.4	6.1	8	10.9	15.1	20.1	25.3	30.2	35.5	40.9	46	50	52.8	54.5	55.1	55.1	57	59.6	60.5	60.9	61	59.4	56	56.7	59	59.5	
	347	4.8	6.1	8.4	12.4	18	25.6	33	40	46.3	52	56.8	60.6	63.5	65.4	66.6	67.5	68.7	70.1	70.9	70.9	70.2	68.8	67.4	66.5	66.1	65.6	
	2.9	3.9	5.5	8.3	13.1	21.2	33	44.5	54.3	62.2	68.7	73.6	77.5	80.4	82.5	84.1	85.3	86.4	87.3	87.7	87.5	86.7	85.2	83.5	82	80.3	78.9	
	2.6	3.4	4.7	7.3	12.6	22.9	42.6	61.8	75.6	85.1	92.1	97.3	101	104	106	108	110	111	111	112	111	110	108	106	103	100	97.9	
	2.2	2.7	3.9	5.7	9.9	18.7	53.1	91.5	108	118	125	131	134	137	139	141	143	144	144	144	144	144	142	140	137	132	128	124
	9437	9492	9539	9557	9541	9467	9256	143	153	163	170	175	178	181	183	185	187	188	187	187	186	185	182	177	171	164	159	
	9490	9567	9617	9637	9623	9546	9332	201	211	220	227	231	234	236	238	240	241	242	241	241	240	238	234	228	220	212	205	
	9471	9545	9587	9602	9589	9515	232	272	284	293	298	299	302	303	304	305	305	305	305	305	303	303	299	289	280	270	264	
	753	802	828	831	832	799	328	381	382	390	393	387	394	391	388	392	385	389	387	387	385	378	371	369	355	350	342	

21-May 2:30pm shades up	604	4	6.2	6.8	7.2	8.1	8.8	9.2	8.4	34.3	78.1	79.79	80.37	80.65	80.81	80.94	81.05	81.15	81.25	81.33	81.42	81.50	81.58	81.66	81.73	81.79	81.85
	602	1.5	5.7	5.8	6.5	7.1	7.8	8.4	8.1	22.7	44.4	59.6	77.16	77.51	77.76	77.96	78.18	78.38	78.58	78.78	78.96	79.14	79.31	79.48	79.63	79.77	79.89
	627	558	6.3	6.1	6.7	7.6	8.5	9.4	10.2	10.9	10.3	10.6	16.3	44.7	54.3	24.7	14.9	13.3	12.7	11.3	10.7	10.8	13.1	15.5	15	13.4	29.4
	639	7603	6.5	6.4	7.5	8.7	10	11.5	12.7	13.8	11.8	11.3	15.4	21.7	22.6	18	17.9	15.6	12.5	11.8	12	12.7	14.3	18.1	18.4	20.8	32.7
	624	5.5	6.1	6.9	8.4	10.1	12.2	14.2	16.2	18.5	18.5	0.2	0.1	11.1	11.4	10.9	25.4	18	9.6	9.5	9.9	10.5	11.7	23.6	20.7	17.1	20.6
	7641	5.2	5.9	7.5	9.7	12.3	15.2	18.1	21.1	24.5	31	38.6	42.5	45	46.7	45.9	38	42.8	51.8	54.8	56.3	57.8	57.1	39.7	50.1	65.6	68.2
	7597	5.3	6	7.9	10.8	14.4	18.2	22.1	25.8	29.8	33.9	37.9	40.9	42.8	43.7	43.6	43	44.1	46.3	47.5	48.3	48.7	47.8	45.8	47.3	50.3	51.6
	7392	4.9	6	7.9	11.6	16.5	22	27.2	32	36.2	40	43.2	45.8	47.5	48.6	49	49.4	50.1	51.2	52.1	52.6	52.7	52.4	52.1	52.5	53.5	54
	3.2	4.2	5.5	7.8	11.7	18.3	26.8	34.4	40.5	45.3	49.1	52	54.2	55.9	57	57.8	58.4	59	59.9	60.5	60.8	61.1	61.1	61	61.4	61.8	62.1
	2.9	3.9	5	7.2	11.1	18.8	33.1	45.5	53.6	58.6	62.2	64.9	66.8	68.4	69.6	70.3	71	71.7	72.1	72.7	73.1	73.3	73.4	73.5	73.6	73.8	74
	2.4	3.2	4.6	6.2	9.4	15.7	40.6	65.5	74	78.7	81.8	83.9	85.4	87	88	88.8	89.4	89.8	90.2	90.4	90.9	91.3	91.4	91.4	91.4	91.4	91.3
	579	605	649	684	7753	7735	7653	101	104	107	110	111	112	114	115	115	115	116	116	116	116	117	117	117	116	116	116
	601	673	739	792	7873	7857	7769	139	143	146	148	149	149	150	151	151	152	151	151	152	152	152	152	152	151	151	150
	595	677	746	799	7880	7862	160	186	196	199	200	200	199	199	199	199	199	198	198	198	198	197	197	195	194	194	194
	560	625	679	714	7794	7781	218	272	279	279	279	273	275	272	269	271	267	267	267	267	262	265	262	258	255	255	254

21-Jun 8:30am shades up	1666	3.4	5.1	5.2	5	6	5.9	5565	6.1	6273	6580	6601	6611	6618	6627	6634	6640	6645	6650	6654	6658	6662	6665	6667	6667	6663	6652	6625	6671	
	1610	1.3	5	4	4.9	5.1	5.8	6.1	6.3	413	580	647	687	714	736	752	767	781	794	808	837	8.7	8.7	8.7	10	10.8	9.6	34.9	81.9	31.6
	1552	1076	4.3	4.3	4.9	5.6	6.7	7.5	7.9	8.8	8.7	9.7	19.3	56.7	59.3	19.9	12.6	11.2	10.1	9.3	8.7	8.7	8.7	10	10.8	9.6	34.9	81.9	31.6	
	1431	988	4.5	4.6	5.7	6.5	7.8	9.3	10.3	11.2	10.2	10	15.9	25.2	26.7	19.5	16.1	14.3	1.1	9.9	9.6	9.9	10.7	12.6	13.4	16.4	32.8	47.8	34.7	
	1250	5.4	4.7	5.4	6.7	8	10.1	12	13.9	16	16.1	0.2	0.2	11.8	12.3	11.2	22.7	16.4	8.2	8	8.1	8.5	8.8	17.8	16.1	13.7	18.5	21.6	19.2	
	1101	4.9	5.3	6.1	8.2	10.4	13.2	16.1	19.1	21.8	27.1	33	36	38	39.4	38.9	32.8	37	43.2	45.2	45.9	46.4	45.2	31.6	38.5	49.3	50.5	51.1	51.4	
	954	5.4	5.9	7.4	9.7	13	17.1	21	24.7	28.4	32	35.1	37.4	39	39.7	39.7	39.2	40.2	41.6	41.9	41.9	41.5	40.2	37.8	38.2	39.7	40.1	39.8	39	
	706	4.8	6.8	8.5	11.7	16.1	22.2	27.9	33.2	37.4	40.9	43.4	45.5	46.9	47.8	48	48	48.2	48.7	48.8	48.3	47.5	46.2	45	44.4	44.1	43.7	43	42.1	
	3	3.9	6.4	8.7	12.8	19.7	29.4	36.1	45.2	50.5	54.1	56.4	58.3	59.7	60.5	60.8	60.7	60.7	60.6	60.2	59.4	58.3	56.9	55.5	54.3	53.2	52.2	51	49.9	
	2.8	3.7	5.2	7.3	12.5	21.8	38.7	53.4	63.1	69.1	72.7	75	76.5	77.8	78.3	78.4	78.2	77.8	77.2	76.5	75.4	73.9	72	70	68	66.1	64.6	63	61.7	
	2.5	3.3	4.6	5.9	9.2	16.7	49.8	79.1	90.3	96.1	99.3	101	102	103	103	103	102	101	100	98.9	97.5	95.6	93.2	90.1	87.1	84.3	81.8	79.8	78.2	
	7090	6819	6654	6505	764	541	351	123	129	134	136	136	136	136	136	135	134	133	131	130	128	125	122	117	113	109	106	103	102	
	7306	7024	6818	6639	868	614	408	176	179	182	182	181	180	178	178	177	176	174	172	170	167	164	159	154	149	144	139	137	134	
	7248	7002	6811	6637	868	619	244	243	243	242	238	235	233	231	229	228	226	224	221	219	216	211	206	201	195	189	185	181	178	
	2888	2717	2569	2435	2274	589	393	1816	1788	1783	1774	1772	1769	1762	292	1760	1757	1758	1751	1750	1748	1740	267	1731	1724	1722	1713	1711	1709	

21-Jun 10:30am shades up	9767	3.6	5.4	5.4	5.6	6.7	7.1	7.7	7.6	8946	9378	9422	9444	9460	9475	9488	9499	9510	9521	9531	9540	9550	9558	9566	9574	9579	9581	9574	9542
	9697	1.7	5.4	4.8	5.7	6.3	7.2	7.9	8.2	468	717	809	854	867	915	938	962	983	1005	1027	1048	1069	9186	9206	9225	9242	9254	9209	
	9629	9153	5.2	5.3	6	7	8.5	9.5	10.4	11.5	11.2	11.9	23.6	78.3	84.5	25.8	15.8	15	13.6	12.3	11.6	11.7	12	14.1	15	13	45.2	115	45.8
	9495	928	5.5	5.8	7	8.3	10	12	13.5	14.9	13.9	14.1	22.9	36.9	38.9	27.7	22.4	19.3	14.8	13.5	13.4	13.9	14.9	18	19.6	24.4	49.1	71.6	51.6
	1205	5.6	5.7	6.8	8.4	10.3	12.9	15.5	18.1	21	20.5	0.2	0.2	17.2	17.9	16.2	31.1	22.7	11.6	11.3	11.4	12.1	12.9	25.5	23.6	20.7	28.1	32.9	29
	1055	5.7	6.4	7.8	10.3	13.2	17	20.8	24.8	28.4	35.2	43	47.1	49.9	52	51.7	44.4	50.3	58.4	61.4	62.6	63.5	62.2	44.8	53.7	67.8	69.3	69.9	70.2
	893	6.2	7.1	9.1	12.2	16.6	21.9	27.1	31.9	36.9	41.8	46.2	49.5	51.8	53.1	53.6	53.5	55.3	57.6	58.4	58.8	58.8	57.3	54.2	54.9	56.9	57.3	56.9	55.7
	584	5.7	7.8	10.2	14.4	20.2	28.3	35.8	42.7	48.5	53.5	57.5	60.5	62.8	64.3	65.2	65.9	66.8	68.1	68.8	68.8	68.2	67	65.8	65	64.6	63.9	62.8	61.2
	3.7	5	7.5	10.5	15.7	24.3	36.8	48.4	57.9	65.1	70.7	74.6	77.8	80.1	81.7	82.8	83.6	84.4	85.1	85.5	85.4	84.7	83.6	82.2	80.9	79.3	77.7	75.7	73.7
	3.5	4.7	6.7	9.5	15.5	26.6	47.8	66.9	80	88.5	94.4	98.7	102	104	106	107	108	109	109	109	109	108	107	105	103	100	97.4	94.5	91.9
	3.1	4.1	5.8	7.8	12.3	21.9	59.9	98	113	122	128	132	135	137	139	140	141	141	141	141	141	140	139	137	133	129	124	120	117
	9432	9309	9242	9179	9083	8885	461	151	161	169	174	177	180	181	183	184	184	185	184	184	184	183	181	178	173	166	161	155	150
	9563	9446	9360	9282	9172	8949	519	213	220	227	231	233	235	236	237	238	238	238	237	237	237	236	234	229	223	215	207	200	195
	9494	9401	9323	9249	9140	8914	275	294	298	302	303	303	304	303	303	302	303	302	303	301	301	298	295	290	282	274	266	257	251
	1145	1087	1025	965	888	708	428	412	391	397	391	389	392	394	387	386	378	385	380	377	381	371	372	367	353	353	340	331	329

21-Jun 12:30pm shades up		9767	9697	9629	9496	1206	1056	893	584	37	3.5	3.1	9432	9563	9494	1145
		3.6	1.7	5.2	5.5	5.6	5.7	6.2	5.7	5	4.7	4.1	9309	9446	9401	145
		5.4	5.4	5.4	5.8	5.7	6.4	7.1	7.8	10.5	6.7	5.8	9242	9360	9323	1087
		5.4	4.8	5.3	5.8	5.7	7.8	10.2	10.2	10.5	9.5	7.8	9179	9282	9249	1025
		5.6	5.7	6	6	6	10.3	14.4	20.2	15.7	15.5	12.3	9083	9172	9140	965
		7.1	7.2	7.2	7.2	7.2	12.9	28.3	28.3	24.3	26.6	21.9	8885	8949	8914	888
		7.7	7.9	8.2	8.5	8.5	17	35.8	36.8	48.4	47.8	59.9	461	519	275	708
		7.6	8.2	10.4	8.5	10.4	20.8	42.7	48.5	57.9	66.9	98	151	220	294	428
		8.5	468	11.5	8.5	11.5	24.8	65.1	53.5	65.1	80	113	161	227	302	412
		8.5	717	11.2	8.5	11.2	35.2	70.7	57.5	70.7	94.4	122	169	231	302	397
		8.5	809	11.9	8.5	11.9	43.1	74.6	60.5	74.6	98.7	132	174	233	303	391
		8.5	854	12.3	8.5	12.3	49.9	80.1	62.8	80.1	102	135	181	235	304	389
		8.5	887	13.6	8.5	13.6	52.5	81.7	64.3	81.7	106	137	184	236	303	384
		8.5	938	15.8	8.5	15.8	58.4	83.6	65.2	83.6	107	139	184	237	303	387
		8.5	962	15.8	8.5	15.8	62.2	84.4	65.9	84.4	108	141	184	238	302	378
		8.5	983	16.2	8.5	16.2	64.4	85.1	66.8	85.1	109	141	184	237	302	385
		8.5	1005	16.2	8.5	16.2	66.1	85.5	68.1	85.5	109	141	184	237	301	380
		8.5	1027	16.2	8.5	16.2	68.8	85.4	68.8	85.4	109	141	184	237	301	377
		8.5	1048	16.2	8.5	16.2	71.7	86.2	68.8	86.2	109	141	184	236	298	371
		8.5	1069	16.2	8.5	16.2	73.3	86.8	68.8	86.8	109	141	184	234	298	372
		8.5	1089	16.2	8.5	16.2	75.3	87.2	68.8	87.2	109	141	183	229	295	372
		8.5	1109	16.2	8.5	16.2	77.7	87.7	68.8	87.7	109	141	178	223	290	367
		8.5	1129	16.2	8.5	16.2	79.3	88.2	68.8	88.2	109	141	173	223	282	353
		8.5	1149	16.2	8.5	16.2	80.9	88.2	68.8	88.2	109	141	166	215	274	340
		8.5	1169	16.2	8.5	16.2	82.2	88.2	68.8	88.2	109	141	155	207	266	331
		8.5	1189	16.2	8.5	16.2	83.6	88.2	68.8	88.2	109	141	141	207	257	329
		8.5	1209	16.2	8.5	16.2	85.4	88.2	68.8	88.2	109	141	129	223	247	317
		8.5	1229	16.2	8.5	16.2	87.2	88.2	68.8	88.2	109	141	117	223	237	304
		8.5	1249	16.2	8.5	16.2	88.2	88.2	68.8	88.2	109	141	109	223	229	301
		8.5	1269	16.2	8.5	16.2	89.7	88.2	68.8	88.2	109	141	101	223	229	301
		8.5	1289	16.2	8.5	16.2	90.2	88.2	68.8	88.2	109	141	94	223	229	301
		8.5	1302	16.2	8.5	16.2	90.9	88.2	68.8	88.2	109	141	87	223	229	301
		8.5	1316	16.2	8.5	16.2	91.1	88.2	68.8	88.2	109	141	81	223	229	301
		8.5	1329	16.2	8.5	16.2	91.9	88.2	68.8	88.2	109	141	75	223	229	301
		8.5	1342	16.2	8.5	16.2	92.2	88.2	68.8	88.2	109	141	69	223	229	301
		8.5	1355	16.2	8.5	16.2	92.7	88.2	68.8	88.2	109	141	63	223	229	301
		8.5	1368	16.2	8.5	16.2	93.3	88.2	68.8	88.2	109	141	57	223	229	301
		8.5	1381	16.2	8.5	16.2	94.1	88.2	68.8	88.2	109	141	51	223	229	301
		8.5	1394	16.2	8.5	16.2	95.1	88.2	68.8	88.2	109	141	45	223	229	301
		8.5	1407	16.2	8.5	16.2	96.2	88.2	68.8	88.2	109	141	39	223	229	301
		8.5	1420	16.2	8.5	16.2	97.5	88.2	68.8	88.2	109	141	33	223	229	301
		8.5	1433	16.2	8.5	16.2	99.0	88.2	68.8	88.2	109	141	27	223	229	301
		8.5	1446	16.2	8.5	16.2	100.6	88.2	68.8	88.2	109	141	21	223	229	301
		8.5	1459	16.2	8.5	16.2	102.3	88.2	68.8	88.2	109	141	15	223	229	301
		8.5	1472	16.2	8.5	16.2	104.1	88.2	68.8	88.2	109	141	9	223	229	301
		8.5	1485	16.2	8.5	16.2	106.0	88.2	68.8	88.2	109	141	3	223	229	301
		8.5	1498	16.2	8.5	16.2	108.0	88.2	68.8	88.2	109	141	-3	223	229	301
		8.5	1511	16.2	8.5	16.2	110.1	88.2	68.8	88.2	109	141	-9	223	229	301
		8.5	1524	16.2	8.5	16.2	112.3	88.2	68.8	88.2	109	141	-15	223	229	301
		8.5	1537	16.2	8.5	16.2	114.6	88.2	68.8	88.2	109	141	-21	223	229	301
		8.5	1550	16.2	8.5	16.2	117.0	88.2	68.8	88.2	109	141	-27	223	229	301
		8.5	1563	16.2	8.5	16.2	119.5	88.2	68.8	88.2	109	141	-33	223	229	301
		8.5	1576	16.2	8.5	16.2	122.1	88.2	68.8	88.2	109	141	-39	223	229	301
		8.5	1589	16.2	8.5	16.2	124.8	88.2	68.8	88.2	109	141	-45	223	229	301
		8.5	1602	16.2	8.5	16.2	127.6	88.2	68.8	88.2	109	141	-51	223	229	301
		8.5	1615	16.2	8.5	16.2	130.5	88.2	68.8	88.2	109	141	-57	223	229	301
		8.5	1628	16.2	8.5	16.2	133.5	88.2	68.8	88.2	109	141	-63	223	229	301
		8.5	1641	16.2	8.5	16.2	136.6	88.2	68.8	88.2	109	141	-69	223	229	301
		8.5	1654	16.2	8.5	16.2	139.8	88.2	68.8	88.2	109	141	-75	223	229	301
		8.5	1667	16.2	8.5	16.2	143.1	88.2	68.8	88.2	109	141	-81	223	229	301
		8.5	1680	16.2	8.5	16.2	146.5	88.2	68.8	88.2	109	141	-87	223	229	301
		8.5	1693	16.2	8.5	16.2	150.0	88.2	68.8	88.2	109	141	-93	223	229	301
		8.5	1706	16.2	8.5	16.2	153.6	88.2	68.8	88.2	109	141	-99	223	229	301
		8.5	1719	16.2	8.5	16.2	157.3	88.2	68.8	88.2	109	141	-105	223	229	301
		8.5	1732	16.2	8.5	16.2	161.1	88.2	68.8	88.2	109	141	-111	223	229	301
		8.5	1745	16.2	8.5	16.2	165.0	88.2	68.8	88.2	109	141	-117	223	229	301
		8.5	1758	16.2	8.5	16.2	169.0	88.2	68.8	88.2	109	141	-123	223	229	301
		8.5	1771	16.2	8.5	16.2	173.1	88.2	68.8	88.2	109	141	-129	223	229	301
		8.5	1784	16.2	8.5	16.2	177.3	88.2	68.8	88.2	109	141	-135	223	229	301
		8.5	1797	16.2	8.5	16.2	181.6	88.2	68.8	88.2	109	141	-141	223	229	301
		8.5	1810	16.2	8.5	16.2	186.0	88.2	68.8	88.2	109	141	-147	223	229	301
		8.5	1823	16.2	8.5	16.2	190.5	88.2	68.8	88.2	109	141	-153	223	229	301
		8.5	1836	16.2	8.5	16.2	195.1	88.2	68.8	88.2	109	141	-159	223	229	301
		8.5	1849	16.2	8.5	16.2	199.8	88.2	68.8	88.2	109	141	-165	223	229	301
		8.5	1862	16.2	8.5	16.2	204.6	88.2	68.8	88.2	109	141	-171	223	229	301
		8.5	1875	16.2	8.5	16.2	209.5	88.2	68.8	88.2	109	141	-177	223	229	301
		8.5	1888	16.2	8.5	16.2	214.5	88.2	68.8	88.2	109	141	-183	223	229	301
		8.5	1901	16.2	8.5	16.2	219.6	88.2	68.8	88.2	109	141	-189	223	229	301
		8.5	1914	16.2	8.5	16.2	224.8	88.2	68.8	88.2	109	141	-195	223	229	301
		8.5	1927	16.2	8.5	16.2	230.1	88.2	68.8	88.2	109	141	-201	223	229	301
		8.5	1940	16.2	8.5	16.2	235.5	88.2	68.8	88.2	109	141	-207	223	229	301
		8.5	1953	16.2	8.5	16.2	241.0	88.2	68.8	88.2	109	141	-213	223	229	301
		8.5	1966	16.2	8.5	16.2	246.6	88.2	68.8	88.2	109	141	-219	223	229	301
		8.5	1979	16.2	8.5	16.2	252.3	88.2	68.8	88.2	109	141	-225	223	229	301
		8.5	1992	16.2	8.5	16.2	258.1	88.2	68.8	88.2	109	141	-231	223	229	301
		8.5	2005	16.2	8.5	16.2	264.0	88.2	68.8	88.2	109	141	-237	223	229	301
		8.5	2018	16.2</												

